


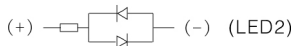
Metal Push Button

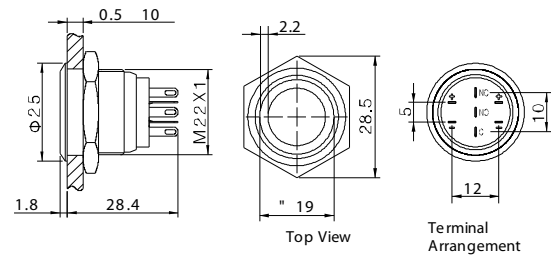
DIWO GQ22-11WE

2 LED Status Lighting Effects, Mounting Hole: Ø22
Anti-vandal & waterproof

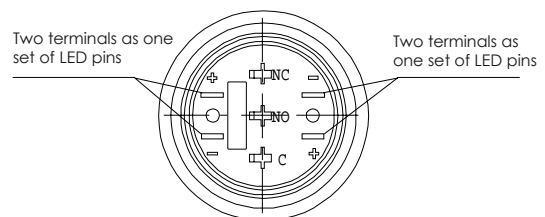
Order-Code:

DIWO-GQ22 11WE / $\Delta\Delta$ / \blacktriangle


Δ	\blacktriangle
Color LED	Lamp Voltage (AC/DC)
R G Y O B W	6V, 12V, 24V, 36V 110V, 220V other on request
Front Shape	flat round
Contact configuration	11: 1NO1NC
Lamp Type	Ring
Crust Material	Stainless Steel
Specifications	
Operating Temperature	-25°C ~ +55°C (no freezing)
Operating Humidity	45 ~ 85% RH
Contact Resistance	≤ 50mΩ
Insulation Resistance	≥ 1000MΩ
Dielectric Strength	2000V, AC 50Hz, 5 sec.
Vibration Resistance	50Hz, Amplitude 1.2mm
Shock Resistance	> 10g
Solder Heat Resistance	320°C (or 30W solderin iron)
CE Standard	EN61058 - 1:2002 + A2:2008 EN60947 - 1:2004
Lamp Rating	
Lamp Type	LED lamp (AC/DC)
Life	40.000 hours
Rated Current	about 15mA, 2mA
Dropping Way	External Resistance
Lamp Circuit Diagram	Using AC/DC LED lamp, the terminals
	 (LED1)  (LED2)
Switching	C (Single-break fast-motion chan-
Panel Thickness	1 ~ 10mm
Torque	0.8 ~ 1.0 Nm
Terminal Type	Pin terminal (2.4 x 0.3)
Mechanical Life	1.000.000 cycles
Electrical Life	300.000 cycles
Operation Pressure	~ 15N
Operation Travel	~ 0.5mm



Terminal Description



Note: C is common used, NO is normal opened, NC is normal closed, +, - are LED pins. There is one LED on the left and another on the right.

	Sign	Diagram
Type C	NO	
	NC	