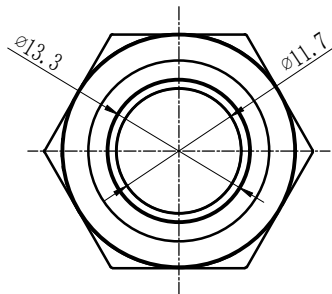
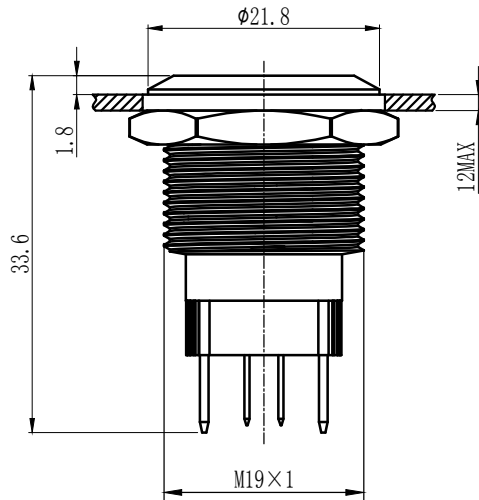
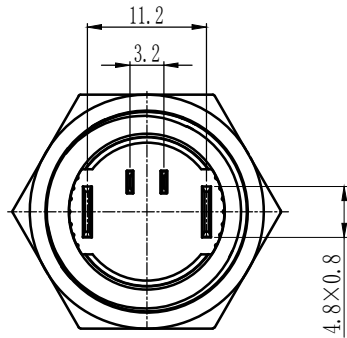
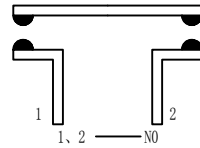


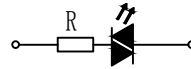
UNIT: mm



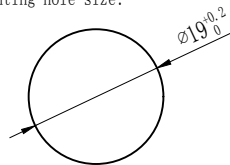
Switch structure description:



Lamp bead equivalent circuit:



Mounting hole size:



Technical requirements:

1. The surface is smooth without burr
2. Electrical parameters: Ith: 10A Ui: 250V
3. Working environment temperature: -25 ~ +65
4. Operation type: Momentary/Latching
5. Movement stroke: About 4.3 mm
6. Connection form: Matching connectors/Welding wire
7. Tightening torque: About 0.6 nm
8. Contact configuration: 1NO
9. Appearance material:
Button surface: PC/Stainless steel
Housing: Stainless steel
Base: PBT
Contact: Silver alloy
10. Lamp bead parameters:
Rated voltage: 6V/12V/24V/36V; 110V/220V
Rated current: 20mA
11. LED Color: Red/Green/Yellow/Orange/Blue/White;
12. LED Life: 50,000 hours

Performance requirements:

1. Protection grade: IP67
2. Contact resistance: 50 m
3. Insulation resistance: 100 m
4. Dielectric Intensity: AC2500V, 1 min, No flicker or breakdown
5. Life:
Electrical part: No abnormal movement for 50,000 times, under rated load

DR.	APPD.	SCALE.	countersign.	Date.	(TITLE): M19 Emergency stop button switch
PW.		1.5:1		2022.8.16	(DWG NO): D10H-S1GQ-D19C-10E(Z)-JS