

S1AGQ - Series

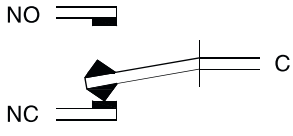
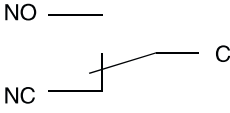
Order-Code:

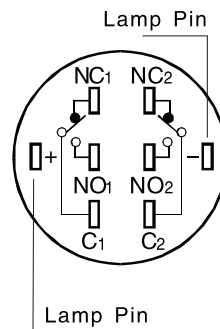
DIOH-S1AGQ_★-□ / ◇ / ■ / ◆● / △ / ▲ / ◎ / ★

★	□	◇	◆●	△	▲	◎	★
Tastenform Front Shape	Kontaktkonfiguration Contact configuration	Lichttyp Lamp Type	Funktion Operating Type	Farbe LED Color LED	Betriebsspannung LED Lamp Voltage (VDC / AC)	Material	Farbe des Tasters Color of Push button's head or case
F: Flach rund H: Erhöht rund F: Flat round H: High round	11: 1NO 1NC 22: 2NO 2NC	D: Punkt E: Ring D: dot E: ring	Z: rastend X: Auswahl Taster Y: Key-Lock M: Buzzer EM: beleuchteter Buzzer ohne Buchstaben: tastend Z: Latching Push button X: Selector Switch Y: Key-Lock Button M: Buzzer EM: Buzzer with illumination No letter means: momentary push button	R: Rot / Red G: Grün / Green Y: Gelb / Yellow O: Orange B: Blau / Blue W: Weiß / White	6 12 24 36 110 220 andere auf Anfrage / other on request	S: Edelstahl A: Zn-Al Legierung S: Stainless Steel A: Zn-Al Alloy	R: Rot / Red G: Grün / Green Y: Gelb / Yellow O: Orange B: Blau / Blue W: Weiß / White N: Schwarz / Black

Schaltung / Switch Structure

Pins

Type	C
Diagramm	
Symbol	
Beschreibung Explanation	Single breakpoint snap-action contacts switch with three terminals



Can be configured up to two sets of switches: C1, NO1, NC1 and C2, NO2, NC2, are a set of switches respectively; Pin C is utility pin and Pin NO is normally open pin, Pin NC is normally closed. +/- Pins are LED lamp pins, normal lamp configuration has no difference between positive and negative. LED and Switch Pin are separated, but switch and external circuit can control the LED state by connecting the LED Pin.

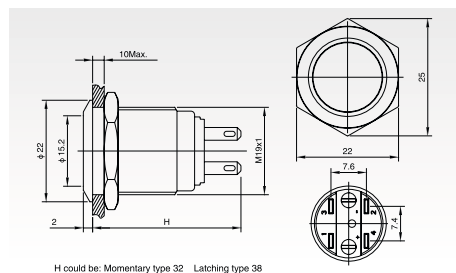
Einbau / Installation



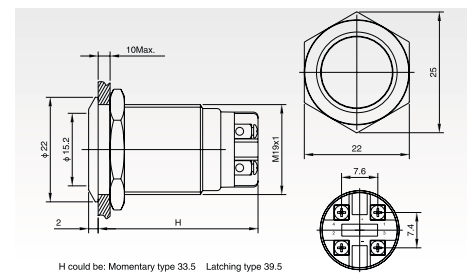
S1AGQ

Mounting Hole Ø19

DIOH-S1AGQ19F - □■/◎



DIOH-S1AGQ19F - EM / Δ / ▲
with Buzzer

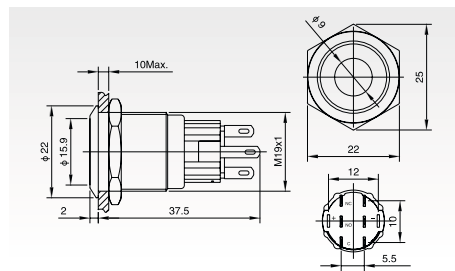


DIOH-S1AGQ19		□■/◎	EM / Δ / ▲
Terminal Type		Pin Terminal (2.8 x 0.5mm)	Pin Terminal (2.8 x 0.5mm)
Switch Type		C	-
Switch Specifications		Ith: 5A / Ui: 250VAC	-
Contact Resistance (mΩ)		≤ 50	-
Insulation Resistance (MΩ)		≥ 1000	-
Dielectric Strength (VAC)		2000	2000
Operating Temperature		-20°C ~ +55°C	-20°C ~ +55°C
Mechanical Life (times)		> 1.000.000	-
Electrical Life (times)		> 50.000	-
Panel Thickness (mm)		1 ~ 10	1 ~ 10
Tonque (Nm)		5 ~ 14	5 ~ 14
Operating Pressure (N)		about 4	-
Operating Stroke (mm)		about 2.5	-
Protection Degree		IP67, IK09	IP50, IK04
Material	Contact	Silver Alloy	-
	Button	Stainless Steel	Stainless Steel
	Case	Stainless Steel	Stainless Steel
	Base	PBT	PBT
Lamp Parameters	Type	-	Buzzer / Buzzer with illumination
	Rated Voltage (V)	-	12 / 24
	Color	-	R G Y O B W
	Sound Intensity (dB)	-	≥ 85 (1m)

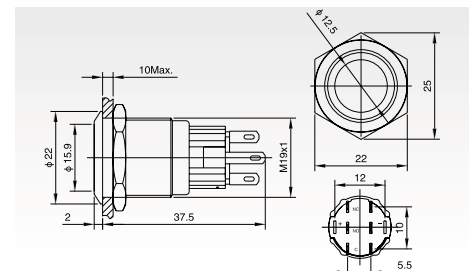
S1AGQ - illuminated

Mounting Hole Ø19

DIOH-S1AGQ19F- □D ■ / △ / ▲ / ◎
Dot-illuminated



DIOH-S1AGQ19F - □E ■ / △ / ▲ / ◎
Ring-illuminated

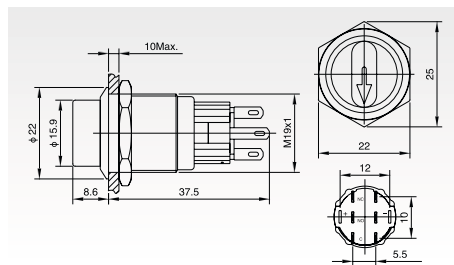


DIOH-S1AGQ19-		□D ■ / △ / ▲ / ◎	□E ■ / △ / ▲ / ◎
Terminal Type		Pin Terminal (2.8 x 0.5mm)	Pin Terminal (2.8 x 0.5mm)
Switch Type	C: Single breakpoint snap action changeover contacts		
Switch Specifications		Ith: 5A / Ui: 250VAC	Ith: 5A / Ui: 250VAC
Contact Resistance (mΩ)		≤ 50	≤ 50
Insulation Resistance (MΩ)		≥ 1000	≥ 1000
Dielectric Strength (VAC)		2000	2000
Operating Temperature		-20°C ~ +55°C	-20°C ~ +55°C
Mechanical Life (times)		> 1.000.000	> 1.000.000
Electrical Life (times)		> 50.000	> 50.000
Panel Thickness (mm)		1 ~ 10	1 ~ 10
Tonque (Nm)		5 ~ 14	5 ~ 14
Operating Pressure (N)		3 ~ 5	3 ~ 5
Operating Stroke (mm)		about 3.1	about 3.1
Protection Degree		IP67, IK09	IP67, IK09
Material	Contact	Silver Alloy	Silver Alloy
	Button	Stainless Steel	Stainless Steel
	Case	Stainless Steel	Stainless Steel
	Base	PBT	PBT
Lamp Parameters	Type	Dot-illuminated LED	Ring-illuminated LED
	Rated Voltage (V)	6 / 12 / 24 / 110 / 220	6 / 12 / 24 / 110 / 220
	Color	R G Y O B W	R G Y O B W
	Life	50.000	50.000

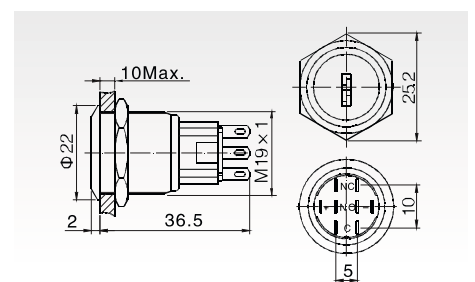
S1AGQ

Mounting Hole Ø19

DIOH-S1AGQ19 - □X/ ◆● / △ / ▲
Selector Switch



DIOH-S1AGQ19 - □Y/ ◆●
Key Switch

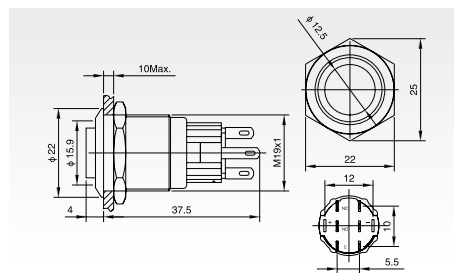


DIOH-S1AGQ19-		□X/ ◆● / △ / ▲	□Y/ ◆●
Terminal Type		Pin Terminal (2.8 x 0.5 mm)	Pin Terminal (2.8 x 0.5 mm)
Switch Type		Structure III	
Switch Specifications		Ith: 5A / Ui: 250VAC	Ith: 5A / Ui: 250VAC
Contact Resistance (mΩ)		≤ 50	≤ 50
Insulation Resistance (MΩ)		≥ 1000	≥ 1000
Dielectric Strength (VAC)		2000	2000
Operating Temperature		-20°C ~ +55°C	-20°C ~ +55°C
Mechanical Life (times)		> 500.000	> 500.000
Electrical Life (times)		> 50.000	> 50.000
Panel Thickness (mm)		1 ~ 10	1 ~ 10
Tonque (Nm)		5 ~ 14	5 ~ 14
Protection Degree		IP65	-
Material	Contact	Silver Alloy	Silver Alloy
	Button	Stainless Steel	Stainless Steel
	Case	Stainless Steel	Stainless Steel
	Base	PBT	PBT
Lamp Parameters	Type	Arrow LED / Pfeil LED	-
	Rated Voltage (V)	1.8 / 2.8 / 6 / 12 / 24 / 110 / 220	-
	Color	R G Y O B W	-
	Life	50.000	-

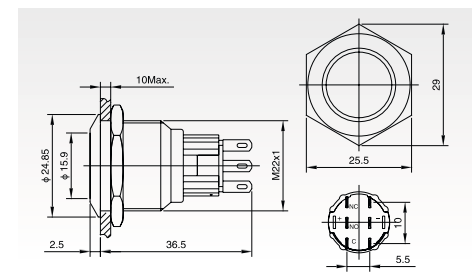
S1AGQ

Mounting Hole Ø19

DIOH-S1AGQ19H - □E ■ / ▲ / ▲ / ◎
High Round Switch - illuminated



DIOH-S1AGQ19F - □■ / ◎
Flat Switch



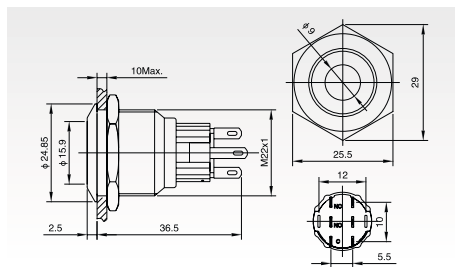
DIOH-S1AGQ19-		□E ■ / ▲ / ▲ / ◎	□■ / ◎
Terminal Type	Pin Terminal (2.8 x 0.5 mm)		Pin Terminal (2.8 x 0.5 mm)
Switch Type	C: Single breakpoint snap action changeover contacts		
Switch Specifications	Ith: 5A / Ui: 250VAC		Ith: 5A / Ui: 250VAC
Contact Resistance (mΩ)	≤ 50		≤ 50
Insulation Resistance (MΩ)	≥ 1000		≥ 1000
Dielectric Strength (VAC)	2000		2000
Operating Temperature	-20°C ~ +55°C		-20°C ~ +55°C
Mechanical Life (times)	> 1.000.000		> 1.000.000
Electrical Life (times)	> 50.000		> 50.000
Panel Thickness (mm)	1 ~ 10		1 ~ 10
Tonque (Nm)	5 ~ 14		5 ~ 14
Protection Degree	IP67, IK09		IP67, IK09
Material	Contact	Silver Alloy	Silver Alloy
	Button	Stainless Steel	Stainless Steel
	Case	Stainless Steel	Stainless Steel
	Base	PBT	PBT
Lamp Parameters	Type	Ring-illuminated LED	-
	Rated Voltage (V)	6 / 12 / 24 / 110 / 220	-
	Color	R G Y O B W	-
	Life	50.000	-

Metal Push Button

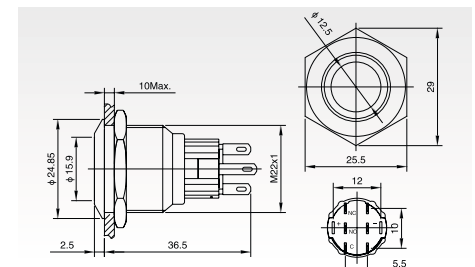
DIOH-S1AGQ 22- illuminated

Mounting Hole Ø22

DIOH-S1AGQ22F - □D ■ / △ / ▲ / ◎
Dot-illuminated



DIOH-S1AGQ22 F- □E ■ / △ / ▲ / ◎
Ring-illuminated



DIOH-S1AGQ22		□D ■ / △ / ▲ / ◎	□E ■ / △ / ▲ / ◎
Terminal Type		Pin Terminal (2.8 x 0.5mm)	Pin Terminal (2.8 x 0.5mm)
Switch Type		C: Single breakpoint snap action changeover contacts	
Switch Specifications		Ith: 5A / Ui: 250VAC	Ith: 5A / Ui: 250VAC
Contact Resistance (mΩ)		≤ 50	≤ 50
Insulation Resistance (MΩ)		≥ 1000	≥ 1000
Dielectric Strength (VAC)		2000	2000
Operating Temperature		-20°C ~ +55°C	-20°C ~ +55°C
Mechanical Life (times)		> 1.000.000	> 1.000.000
Electrical Life (times)		> 50.000	> 50.000
Panel Thickness (mm)		1 ~ 10	1 ~ 10
Tonque (Nm)		5 ~ 14	5 ~ 14
Operating Pressure (N)		3 ~ 5	3 ~ 5
Operating Stroke (mm)		about 3.1	about 3.1
Protection Degree		IP67, IK09	IP67, IK09
Material	Contact	Silver Alloy	Silver Alloy
	Button	Stainless Steel	Stainless Steel
	Case	Stainless Steel	Stainless Steel
	Base	PBT	PBT
Lamp Parameters	Type	Dot-illuminated LED	Ring-illuminated LED
	Rated Voltage (V)	6 / 12 / 24 / 110 / 220	6 / 12 / 24 / 110 / 220
	Color	R G Y O B W	R G Y O B W
	Life	50.000	50.000