

Metal Push Button HBGQ30

Order-Code:

DIOH-GQ30P- □/◇/■/△ / ▲ / ◎/★

□	◇	■	△	▲	◎
Kontaktkonfiguration Contact configuration	Lichttyp Lamp Type	Tastfunktion Operation Type	Farbe LED Color LED	Betriebsspannung LED Lamp Voltage (VDC / AC)	Material
11: 1NO 1NC 22: 2NO 2NC	D: Punkt / Dot E: Ring	Z: Rastend / Latching ohne Buchstaben: Tastend / Momentary	R: Rot / Red G: Grün / Green Y: Gelb / Yellow O: Orange B: Blau / Blue W: Weiß / White	6 12 24 36 110 220	S: Edelstahl / Stainless Steel A: Zn-Al Legierung (Schwarz) Zn-Al Alloy (black)

Frontshape	Flat 0°	
Terminal Type	Pin Terminal	
Switch Type	Za: Double-break fast-motion changeover contact	
Switch Specifications	Ith: 5A Ui: 250VAC	
Contact Resistance (mΩ)	≤ 50	
Insulation Resistance (MΩ)	≥ 1000	
Dielectric Strength (VAC)	2000	
Operating Temperature	-20°C ~ +55°C	
Mechanical Life (times)	> 1.000.000	
Electrical Life (times)	> 200.000	
Panel Thickness (mm)	1 ~ 10	
Tonque (Nm)	5 ~ 14	
Operating Pressure (N)	~ 5.5 -7	
Operating Stroke (mm)	~ 2.8	
Protection Degree	IP65, IK10	
LED Lamp Life (h)	50.000	
Material	Contact	Silver Alloy
	Button	Stainless Steel
	Case	Stainless Steel
	Base	PA

DIOH-GQ30P- □■/◎



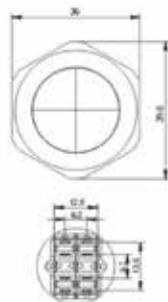
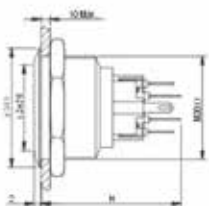
DIOH-GQ30P- □D■/△ / ▲ / ◎



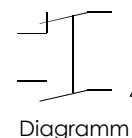
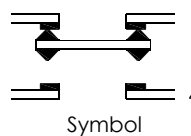
DIOH-GQ30P- □E ■/△ / ▲ / ◎



DIOH-GQ30P- □ET■/△ / ▲ / ◎



Za- Switch Type



Contact Configuration

