

Metal Push Button HBGQ28P

Order-Code:

DIOH-GQ28P - □/◇/■/△ / ▲ / ◎/★

| □ | ◇ | ■ | △ | ▲ | ◎ |
|---|---------------------------|--|---|---|---|
| Kontaktkonfiguration Contact configuration | Lichttyp Lamp Type | Tastfunktion Operation Type | Farbe LED Color LED | Betriebsspannung LED Lamp Voltage (VDC / AC) | Material |
| 11: 1NO 1NC 22: 2NO 2NC | D: Punkt / Dot E: Ring | Z: Rastend / Latching ohne Buchstaben: Tastend / Momentary | R: Rot / Red G: Grün / Green Y: Gelb / Yellow O: Orange B: Blau / Blue W: Weiß / White | 6 12 24 36 110 220 | S: Edelstahl / Stainless Steel A: Zn-Al Legierung (Schwarz) Zn-Al Alloy (black) |

| | | |
|----------------------------|---|-----------------|
| Frontshape | Flat 0° | |
| Terminal Type | Pin Terminal | |
| Switch Type | Za: Double-break fast-motion changeover contact | |
| Switch Specifications | Ith: 5A Ui: 250VAC | |
| Contact Resistance (mΩ) | ≤ 50 | |
| Insulation Resistance (MΩ) | ≥ 1000 | |
| Dielectric Strength (VAC) | 2000 | |
| Operating Temperature | -20°C ~ +55°C | |
| Mechanical Life (times) | > 1.000.000 | |
| Electrical Life (times) | > 200.000 | |
| Panel Thickness (mm) | 1 ~ 10 | |
| Tonque (Nm) | 5 ~ 14 | |
| Operating Pressure (N) | ~ 4 | |
| Operating Stroke (mm) | ~ 2.8 | |
| Protection Degree | IP65, IK10 | |
| LED Lamp Life (h) | 50.000 | |
| Material | Contact | Silver Alloy |
| | Button | Stainless Steel |
| | Case | Stainless Steel |
| | Base | PA |

DIOH-GQ28P- □■/ ◎



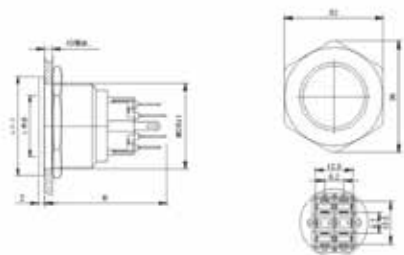
DIOH-GQ28P- □D■/ △ / ▲ / ◎



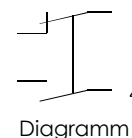
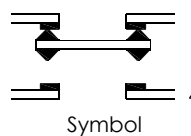
DIOH-GQ28P- 11E ■/ △ / ▲ / ◎



DIOH-GQ28P- □ET■/ △ / ▲ / ◎



Za- Switch Type



Contact Configuration

