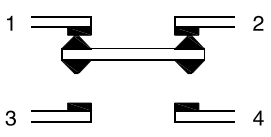
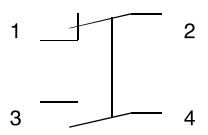


Order-Code:

DIOH - GQ★ - □/◇/■/△ / ▲ / ◎/ ★

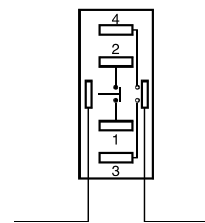
★	□	◇	■	△	▲	◎	★
Ø Einbau- durchmesser Mounting Hole	Kontakt Contact confi- guration	Lichttyp Lamp Type	Tastfunktion Operating Type	Farbe LED Color LED	Betriebsspannung LED Lamp Voltage (VDC / AC)	Material	Farbe des Tasters Color of Push button's head or case
22mm 25mm 30mm	11: 1NO 1NC 22: 2NO 2NC	D: Punkt E: Ring D: dot E: ring	Z: Rastend ohne Buchstabe: Tastend Z: Latching Push button No letter means: momentary push button	R: Rot / Red G: Grün / Green Y: Gelb / Yellow O: Orange B: Blau / Blue W: Weiß / White	6 12 24 110 220 andere auf Anfrage others on request	S: Edelstahl A: Zn-Al Legie- rung (Schwarz) S: Stainless Steel A: Zn-Al Alloy (black)	R: Rot / Red G: Grün / Green Y: Gelb / Yellow O: Orange B: Blau / Blue W: Weiß / White N: Schwarz / Black

Schaltung / Switch Strucutre

Type	Za
Diagramm	
Symbol	
Beschreibung / Explanation	Double break snap-action changeover contacts switch with four terminals

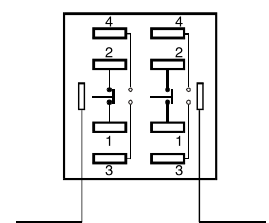
Pins

DIOH-GQ22



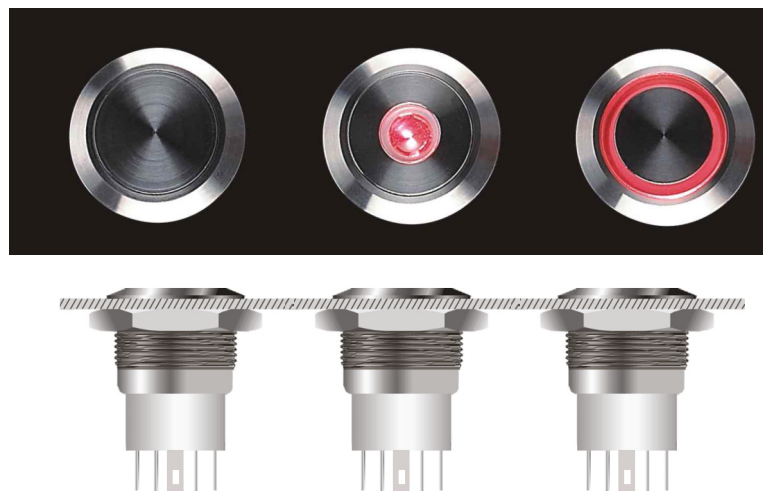
Pin 1,2,3,4 are a set of switch
NC Pin 1, Pin 2 is normally closed
contact NC. NO Pin 3, Pin 4 is
normally open contact Number.

DIOH-GQ25



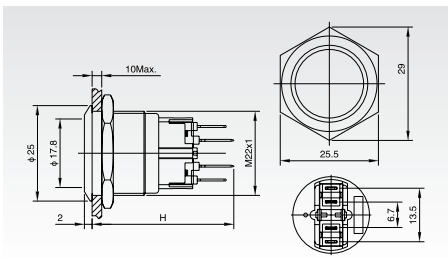
Normal lamp configuration has
no different between positive
and negative, LED has built-in
protection resistors, no need for
external connection. LED and
Switch Pin are separated, but
switch and external circuit can
control the LED state by connec-
tion the LED Pin.

Einbau / Installation

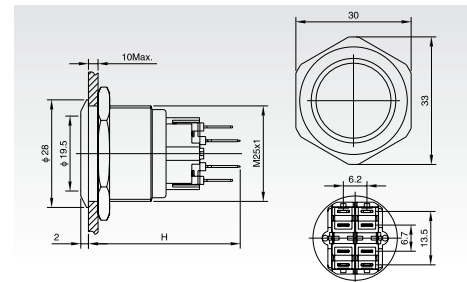


GQ22, GQ25

DIOH-GQ22 - 11■/ ◎
Flat



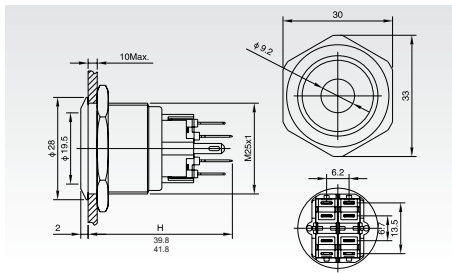
DIOH-GQ25 - □■/ ◎
Flat



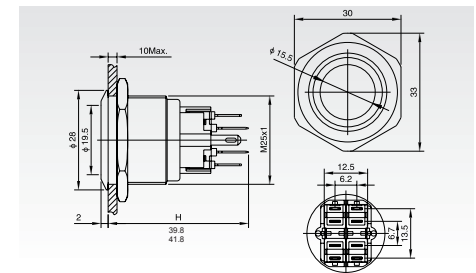
DIOH-GQ		22 - 11■/ ◎	25 - □■/ ◎
Terminal Type		Pin Terminal (2.8 x 0.5mm)	Pin Terminal (2.8 x 0.5mm)
Switch Type		Za	
Switch Specifications		Ith: 5A / Ui: 250VAC	Ith: 5A / Ui: 250VAC
Contact Resistance (mΩ)		≤ 50	≤ 50
Insulation Resistance (MΩ)		≥ 1000	≥ 1000
Dielectric Strength (VAC)		2000	2000
Operating Temperature		-20°C ~ +55°C	-20°C ~ +55°C
Mechanical Life (times)		> 1.000.000	> 1.000.000
Electrical Life (times)		> 50.000	> 50.000
Panel Thickness (mm)		1 ~ 6	1 ~ 6
Tonque (Nm)		5 ~ 14	5 ~ 14
Operating Pressure (N)		5.5 ~ 7	5.5 ~ 7
Operating Stroke (mm)		about 2.8	about 2.8
Protection Degree		IP65, IK10	IP65, IK10
Material	Contact	Silver Alloy	Silver Alloy
	Button	Stainless Steel	Stainless Steel
	Case	Stainless Steel	Stainless Steel
	Base	PA	PA

GQ25 - illuminated

DIOH-GQ25 - □D■/ △ / ▲ / ◎
Dot-illuminated



DIOH-GQ25- □E■/ △ / ▲ / ◎
Ring-illuminated



DIOH-GQ25		□D■/ △ / ▲ / ◎	□E■/ △ / ▲ / ◎
Terminal Type		Pin Terminal (2.8 x 0.5mm)	Pin Terminal (2.8 x 0.5mm)
Switch Type		Za	
Switch Specifications		Ith: 5A / Ui: 250VAC	Ith: 5A / Ui: 250VAC
Contact Resistance (mΩ)		≤ 50	≤ 50
Insulation Resistance (MΩ)		≥ 1000	≥ 1000
Dielectric Strength (VAC)		2000	2000
Operating Temperature		-20°C ~ +55°C	-20°C ~ +55°C
Mechanical Life (times)		> 1.000.000	> 1.000.000
Electrical Life (times)		> 50.000	> 50.000
Panel Thickness (mm)		1 ~ 10	1 ~ 10
Tonque (Nm)		5 ~ 14	5 ~ 14
Operating Pressure (N)		5.5 ~ 7	5.5 ~ 7
Operating Stroke (mm)		about 2.8	about 2.8
Protection Degree		IP65, IK10	IP65, IK10
Material	Contact	Silver Alloy	Silver Alloy
	Button	Stainless Steel	Stainless Steel
	Case	Stainless Steel	Stainless Steel
	Base	PA	PA
Lamp Parameters	Type	Dot-illuminated LED	Ring-illuminated LED
	Rated Voltage (V)	6 / 12 / 24 / 110 / 220	6 / 12 / 24 / 110 / 220
	Color	R G Y O B W	R G Y O B W
	Life	50.000	50.000