

Order-Code:

DIOH-GQ★■ - □/◇/◆/△ / ▲ / ◎/★

★	■	□	◇	◆	△	▲	◎	★
Ø Einbau- durch- messer	Tastenform	Kontakt	Lichttyp	Anschlussstyp	Farbe LED	Betriebs- spannung LED (VDC / AC)	Material	Farbe des Tasters
8mm 12mm 16mm 19mm 22mm	F: Flach rund H: Erhöht rund P: Flach B: Gewölbt C: Konkav	10: 1NO 11: 1NO 1NC 22: 2NO 2NC * 1NC auf Anfrage	D = Punkt E = Ring Em = Buzzer mit LED Be- leuchtung	J: Lötanschluss ohne Buchstaben: Schraubklem- men- anschluss	R: Rot G: Grün Y: Gelb O: Orange B: Blau W: Weiß	6 12 24 36 110 220 andere auf Anfrage	N: Messing vernickelt G: Messing vergoldet S: Edelstahl A: Zn-Al Legierung (Schwarz) T: Zn-Al Legierung (Weißsilber) PC: technischer Kunststoff	R: Rot G: Grün Y: Gelb O: Orange B: Blau W: Weiß

Einbau



Oberflächen



Edelstahl /
Spiegeloberfläche



Edelstahl /
Gebürstete Oberfläche

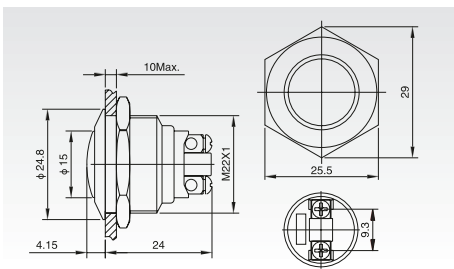


Gravierung der Taste
auf Wunsch möglich

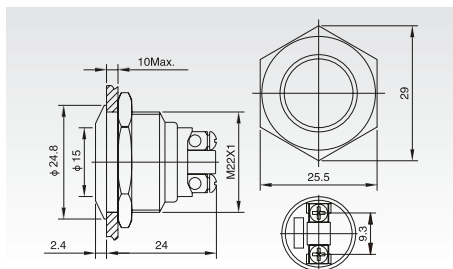
Metal Push Button

GQ22 - Screw Terminal

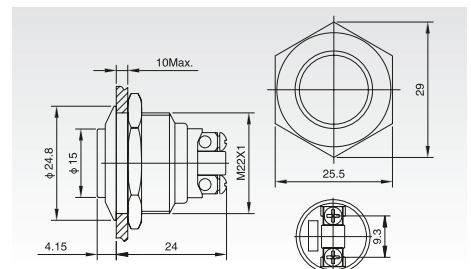
DIOH-GQ22B - 10 / ◎
Domed



DIOH-GQ22F - 10 / ◎
Flat Round



DIOH-GQ22H - 10 / ◎
High Round



	DIOH-GQ22 B - 10 / ◎	F - 10 / ◎	H - 10 / ◎
Terminal Type	Screw Terminal	Screw Terminal	Screw Terminal
Switch Type	X: Two Terminal breakpoints slow moving contact		
Switch Specifications	2A / 36VDC	2A / 36VDC	2A / 36VDC
Contact Resistance (mΩ)	≤ 50	≤ 50	≤ 50
Insulation Resistance (MΩ)	≥ 1000	≥ 1000	≥ 1000
Dielectric Strength (VAC)	2000	2000	2000
Operating Temperature	-20°C ~ +55°C	-20°C ~ +55°C	-20°C ~ +55°C
Mechanical Life (times)	> 1.000.000	> 1.000.000	> 1.000.000
Electrical Life (times)	> 200.000	> 200.000	> 200.000
Panel Thickness (mm)	1 ~ 10	1 ~ 10	1 ~ 10
Tonque (Nm)	5 ~ 14	5 ~ 14	5 ~ 14
Operating Pressure (N)	about 4	about 4	about 4
Operating Stroke (mm)	about 1.8	about 1.8	about 1.8
Protection Degree	IP65, IK08	IP65, IK08	IP65, IK08
Material	Contact	Silver Alloy	Silver Alloy
	Button	Stainless Steel (Mirror / Spiral Pattern)	Stainless Steel (Mirror / Spiral Pattern)
	Case	Stainless Steel / Nickel-plated Brass	Stainless Steel / Nickel-plated Brass
	Base	PBT	PBT

GQ22 - Pin Terminal

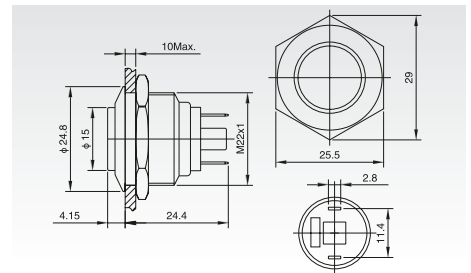
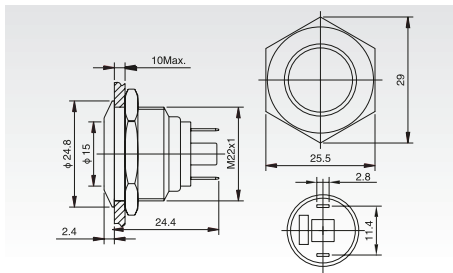
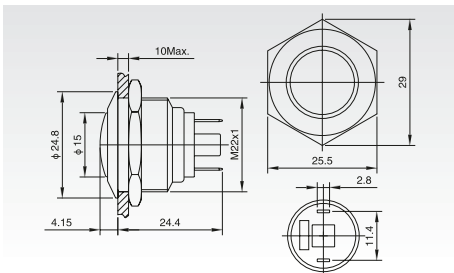
DIOH-GQ22B - 10 / J / ☉
Domed



DIOH-GQ22F - 10 / J / ☉
Flat Round



DIOH-GQ22H - 10 / J / ☉
High Round



	DIOH-GQ22 B - 10 / J / ☉	F - 10 / J / ☉	H - 10 / J / ☉
Terminal Type	Pin Terminal (2.8 x 0.5mm)	Pin Terminal (2.8 x 0.5mm)	Pin Terminal (2.8 x 0.5mm)
Switch Type	X: Two Terminal breakpoints slow moving contact		
Switch Specifications	2A / 36VDC	2A / 36VDC	2A / 36VDC
Contact Resistance (mΩ)	≤ 50	≤ 50	≤ 50
Insulation Resistance (MΩ)	≥ 1000	≥ 1000	≥ 1000
Dielectric Strength (VAC)	2000	2000	2000
Operating Temperature	-20°C ~ +55°C	-20°C ~ +55°C	-20°C ~ +55°C
Mechanical Life (times)	> 1.000.000	> 1.000.000	> 1.000.000
Electrical Life (times)	> 200.000	> 200.000	> 200.000
Panel Thickness (mm)	1 ~ 10	1 ~ 10	1 ~ 10
Tonque (Nm)	5 ~ 14	5 ~ 14	5 ~ 14
Operating Pressure (N)	about 4	about 4	about 4
Operating Stroke (mm)	about 1.8	about 1.8	about 1.8
Protection Degree	IP65, IK08	IP65, IK08	IP65, IK08
Material	Contact	Silver Alloy	Silver Alloy
	Button	Stainless Steel (Mirror / Spiral Pattern)	Stainless Steel (Mirror / Spiral Pattern)
	Case	Stainless Steel / Nickel-plated Brass	Stainless Steel / Nickel-plated Brass
	Base	PBT	PBT