

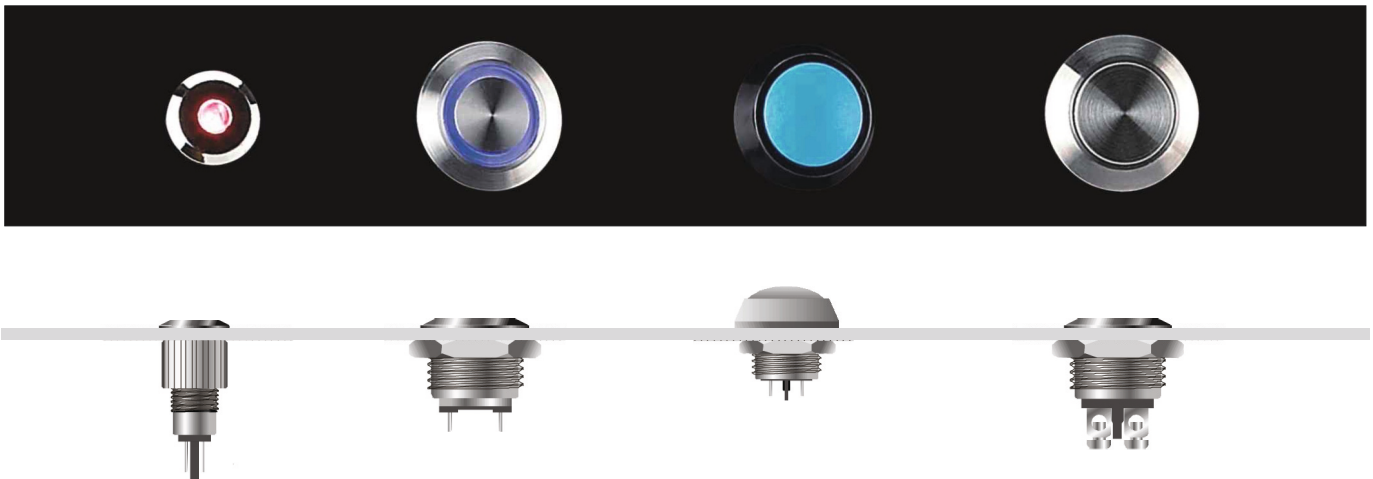
Metal Push Button

Order-Code:

DIOH-GQ ★ ■ - □ / ◇ / ◆ / △ / ▲ / ◎ / ★

★	■	□	◇	◆	△	▲	◎	★
Ø Einbau- durchmesser Mounting Hole	Tastenform Front Shape	Kontaktkonfi- guration Contact confi- guration	Lichttyp Lamp Type	Anschluss- typ Terminal Type	Farbe LED Color LED	Betriebsspan- nung LED Lamp Voltage (VDC / AC)	Material	Farbe des Tasters / Color of Push button's head or case
8mm 12mm 16mm 19mm 22mm	F: Flach rund H: Erhöht rund C: Konkav B: Gewölbt F: Flat round H: High round C: Concave B: Domed	10: 1NO 11: 1NO 1NC 22: 2NO 2NC * 1NC auf Anfrage	D: Punkt E: Ring Em: Buzzer mit LED D: dot E: ring Em: buzzer with illumina- tion	J: Lötanschluss ohne Buchstaben: Schraubklem- menanschluss J: Pin Terminal No letter: Screw Terminal	R: Rot / Red G: Grün / Green Y: Gelb / Yellow O: Orange B: Blau / Blue W: Weiß / White	6 12 24 36 110 220 andere auf Anfrage / other on request	N: Messing vernickelt G: Messing vergoldet S: Edelstahl A: Zn-Al Legierung (Schwarz) T: Zn-Al Legierung (Weißsilber) PC: technischer Kunststoff N: Nickel-Plated Brass G: Gold-Plated Brass S: Stainless Steel A: Zn-Al Alloy (black) T: Zn-Al Alloy (silver white)	R: Rot / Red G: Grün / Green Y: Gelb / Yellow O: Orange B: Blau / Blue W: Weiß / White N: Schwarz / Black

Einbau / Installation



Oberflächen / Surface



Edelstahl /
Spiegeloberfläche

Stainless Steel /
Mirror surface



Edelstahl /
Gebürstete Oberfläche

Stainless Steel /
Sprial Pattern Effect



Gravierung der Taste
auf Wunsch möglich

Labelling on request

GQ19 - Screw Terminal

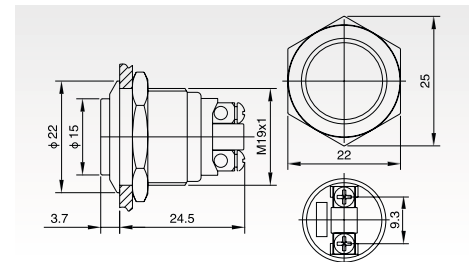
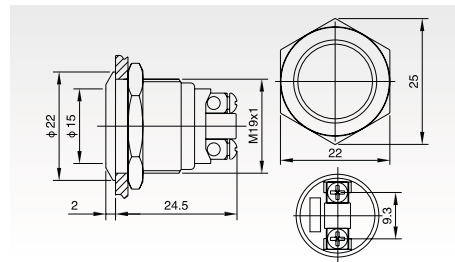
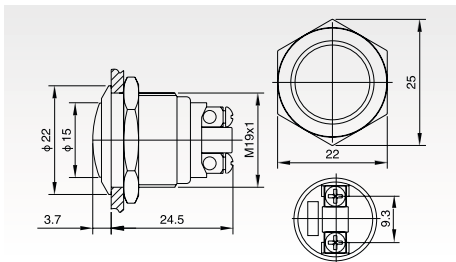
DIOH-GQ19B - 10 / ◎
Domed



DIOH-GQ19F - 10 / ◎
Flat Round



DIOH-GQ19H - 10 / ◎
High Round



	DIOH-GQ19 B - 10 / ◎	F - 10 / ◎	H - 10 / ◎
Terminal Type	Screw Terminal	Screw Terminal	Screw Terminal
Switch Type	X: Two Terminal breakpoints slow moving contact		
Switch Specifications	2A / 36VDC	2A / 36VDC	2A / 36VDC
Contact Resistance (mΩ)	≤ 50	≤ 50	≤ 50
Insulation Resistance (MΩ)	≥ 1000	≥ 1000	≥ 1000
Dielectric Strength (VAC)	2000	2000	2000
Operating Temperature	-20°C ~ +55°C	-20°C ~ +55°C	-20°C ~ +55°C
Mechanical Life (times)	> 1.000.000	> 1.000.000	> 1.000.000
Electrical Life (times)	> 200.000	> 200.000	> 200.000
Panel Thickness (mm)	1 ~ 10	1 ~ 10	1 ~ 10
Tonque (Nm)	5 ~ 14	5 ~ 14	5 ~ 14
Operating Pressure (N)	about 4	about 4	about 4
Operating Stroke (mm)	about 1.8	about 1.8	about 1.8
Protection Degree	IP65, IK08	IP65, IK08	IP65, IK08
Material	Contact	Silver Alloy	Silver Alloy
	Button	Stainless Steel (Mirror / Spiral Pattern)	Stainless Steel (Mirror / Spiral Pattern)
	Case	Stainless Steel / Nickel-plated Brass	Stainless Steel / Nickel-plated Brass
	Base	PBT	PBT

Metal Push Button

GQ19 - Pin Terminal

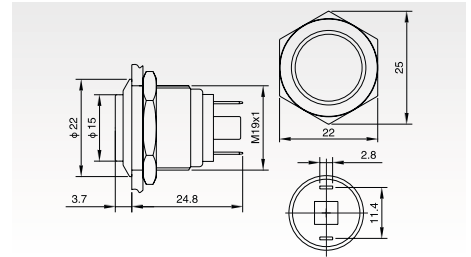
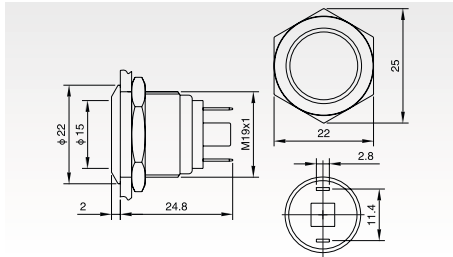
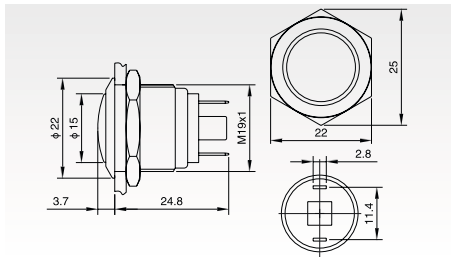
DIOH-GQ19B - 10 / J / ☉
Domed



DIOH-GQ19F - 10 / J / ☉
Flat Round



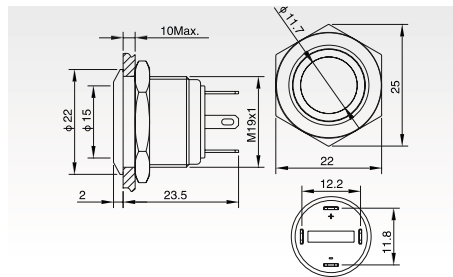
DIOH-GQ19H - 10 / J / ☉
High Round



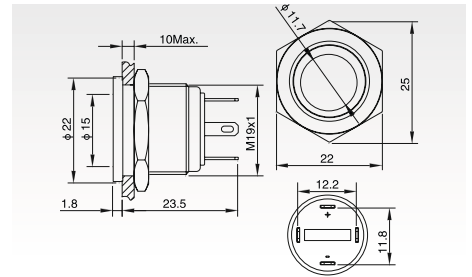
DIOH-GQ19	B - 10 / J / ☉	F - 10 / J / ☉	H - 10 / J / ☉	
Terminal Type	Pin Terminal (2.0 x 0.5mm)	Pin Terminal (2.0 x 0.5mm)	Pin Terminal (2.0 x 0.5mm)	
Switch Type	X: Two Terminal breakpoints slow moving contact			
Switch Specifications	2A / 36VDC	2A / 36VDC	2A / 36VDC	
Contact Resistance (mΩ)	≤ 50	≤ 50	≤ 50	
Insulation Resistance (MΩ)	≥ 1000	≥ 1000	≥ 1000	
Dielectric Strength (VAC)	2000	2000	2000	
Operating Temperature	-20°C ~ +55°C	-20°C ~ +55°C	-20°C ~ +55°C	
Mechanical Life (times)	> 1.000.000	> 1.000.000	> 1.000.000	
Electrical Life (times)	> 200.000	> 200.000	> 200.000	
Panel Thickness (mm)	1 ~ 10	1 ~ 10	1 ~ 10	
Tonque (Nm)	5 ~ 14	5 ~ 14	5 ~ 14	
Operating Pressure (N)	about 4	about 4	about 4	
Operating Stroke (mm)	about 1.8	about 1.8	about 1.8	
Protection Degree	IP65, IK08	IP65, IK08	IP65, IK08	
Material	Contact	Silver Alloy	Silver Alloy	Silver Alloy
	Button	Stainless Steel (Mirror / Spiral Pattern)	Stainless Steel (Mirror / Spiral Pattern)	Stainless Steel (Mirror / Spiral Pattern)
	Case	Stainless Steel / Nickel-plated Brass	Stainless Steel / Nickel-plated Brass	Stainless Steel / Nickel-plated Brass
	Base	PBT	PBT	PBT

GQ19 - Ring-illuminated

DIOH-GQ19F - 10E/J/Δ/▲/◎
Flat Round



DIOH-GQ19P - 10E/J/Δ/▲/T
Flat

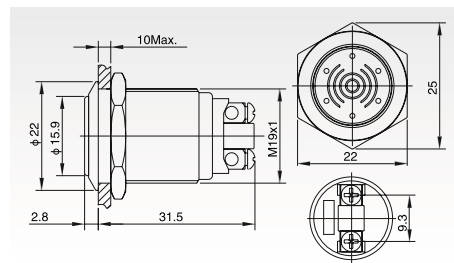


DIOH-GQ19		F - 10E / J / Δ / ▲ / ◎	P - 10E / J / Δ / ▲ / T
Terminal Type		Pin Terminal (2.8 x 0.5mm)	Pin Terminal (2.8 x 0.5mm)
Switch Type		X: Two Terminal breakpoints slow moving contact	
Switch Specifications		2A / 36VDC	2A / 36VDC
Contact Resistance (mΩ)		≤ 50	≤ 50
Insulation Resistance (MΩ)		≥ 1000	≥ 1000
Dielectric Strength (VAC)		2000	2000
Operating Temperature		-20°C ~ +55°C	-20°C ~ +55°C
Mechanical Life (times)		> 1.000.000	> 1.000.000
Electrical Life (times)		> 200.000	> 200.000
Panel Thickness (mm)		1 ~ 10	1 ~ 10
Tonque (Nm)		5 ~ 14	5 ~ 14
Operating Pressure (N)		about 4	about 4
Operating Stroke (mm)		about 1.8	about 1.8
Protection Degree		IP65, IK08	IP65, IK08
Material	Contact	Silver Alloy	Silver Alloy
	Button	Stainless Steel / (Mirror / Spiral Pattern)	Stainless Steel / (Mirror / Spiral Pattern) Zn-Al Alloy
	Case	Stainless Steel / Nickel Plated Brass	Stainless Steel, Nickel Plated Brass, Zn-Al Alloy
	Base	PBT	PBT
Lamp Parameters	Type	Ring-illuminated LED	Ring-illuminated LED
	Rated Voltage (V)	2 / 6 / 12 / 24 / 36	2 / 6 / 12 / 24 / 36
	Color	R G Y O B W	R G Y O B W
	Life	50.000	50.000

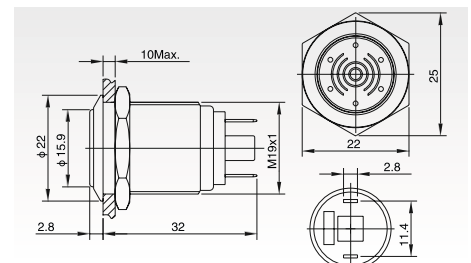
Current Limiting Resistor Configuration Table	Rated Voltage		6V	12V	24V	36V	Formula $R = \frac{U-U_e}{I_e}$
	Current Limiting Resistor	R Y O	210 Ω, 1/4W	510 Ω, 1/2W	1.2k Ω, 3/4W	2.2k Ω, 1W	
	G B W	160 Ω, 1/4W	460 Ω, 1/2W	1.2k Ω, 3/4W	2.2k Ω, 1W		

GQ19 - Buzzer with illumination

DIOH-GQ19 - EM/Δ/▲
Flat Round with holes



DIOH-GQ16M - EM/J/Δ/▲
Flat Round with holes



DIOH-GQ19		EM / Δ / ▲	EM / J / Δ / ▲
Terminal Type		Screw Terminal	Screw Terminal
Switch Type			
Switch Specifications			
Contact Resistance (mΩ)			
Insulation Resistance (MΩ)			
Dielectric Strength (VAC)		2000	2000
Operating Temperature		-20°C ~ +55°C	-20°C ~ +55°C
Panel Thickness (mm)		1 ~ 10	1 ~ 10
Tonque (Nm)		5 ~ 14	5 ~ 14
Protection Degree		IP65, IK08	IP65, IK08
Material	Contact		
	Button	Stainless Steel	Stainless Steel
	Case	Stainless Steel	Stainless Steel
	Base	PBT	PBT
Lamp Parameters	Type	Buzzer / Buzzer with illumination	Buzzer / Buzzer with illumination
	Rated Voltage (V)	12 / 24	12 / 24
	Color	R G Y O B W	R G Y O B W
	Sound Intensity (dB)	≥ 85 (1m)	≥ 85 (1m)