

Order-Code:

DIOH-GQ ★ ■ - □ / ◇ / ◆ / △ / ▲ / ◎ / ☆

★	■	□	◇	◆	△	▲	◎	★
Ø Einbau- durchmesser Mounting Hole	Tastenform Front Shape	Kontaktkonfi- guration Contact confi- guration	Lichttyp Lamp Type	Anschluss- typ Terminal Type	Farbe LED Color LED	Betriebsspan- nung LED Lamp Voltage (VDC / AC)	Material	Farbe des Tasters / Color of Push button's head or case
8mm 12mm 16mm 19mm 22mm	F: Flach rund H: Erhöht rund C: Konkav B: Gewölbt  F: Flat round H: High round C: Concave B: Domed	10: 1NO 11: 1NO 1NC 22: 2NO 2NC  * 1NC auf Anfrage	D: Punkt E: Ring Em: Buzzer mit LED  D: dot E: ring Em: buzzer with illumina- tion	J: Lötanschluss ohne Buchstaben: Schraubklem- menanschluss  J: Pin Terminal No letter: Screw Terminal	R: Rot / Red G: Grün / Green Y: Gelb / Yellow O: Orange B: Blau / Blue W: Weiß / White	6 12 24 36 110 220  andere auf Anfrage / other on request	N: Messing vernickelt G: Messing vergoldet S: Edelstahl A: Zn-Al Legierung (Schwarz) T: Zn-Al Legierung (Weißsilber) PC: technischer Kunststoff  N: Nickel-Plated Brass G: Gold-Plated Brass S: Stainless Steel A: Zn-Al Alloy (black) T: Zn-Al Alloy (silver white)	R: Rot / Red G: Grün / Green Y: Gelb / Yellow O: Orange B: Blau / Blue W: Weiß / White N: Schwarz / Black

## Einbau / Installation



## Oberflächen / Surface



Edelstahl /  
Spiegeloberfläche

Stainless Steel /  
Mirror surface



Edelstahl /  
Gebürstete Oberfläche

Stainless Steel /  
Sprial Pattern Effect

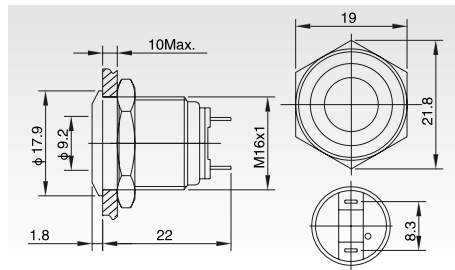


Gravierung der Taste  
auf Wunsch möglich

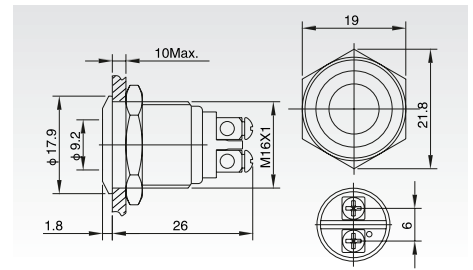
Labelling on request

## GQ16 - Flat dot

DIOH-GQ16F - D / J / Δ / ▲ / ◎  
Signal Lamp



DIOH-GQ16F - D / Δ / ▲ / ◎  
Signal Lamp



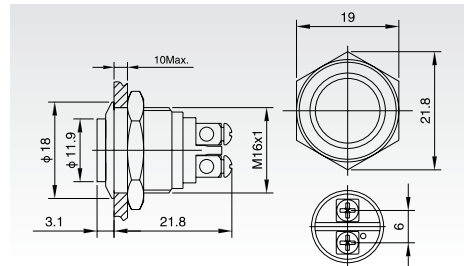
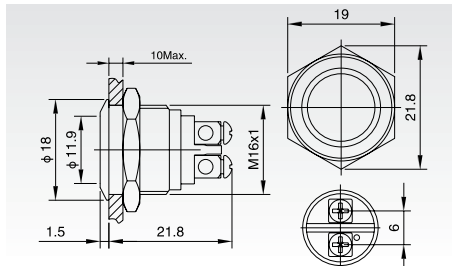
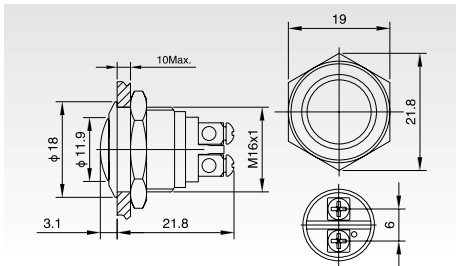
DIOH-GQ16F -		D / J / Δ / ▲ / ◎		D / Δ / ▲ / ◎	
Terminal Type		Pin Terminal (2.0 x 0.5mm)		Screw Terminal	
Dielectric Strength (VAC)		2000		2000	
Operating Temperature		-20°C ~ +55°C		-20°C ~ +55°C	
Panel Thickness (mm)		1 ~ 10		1 ~ 10	
Tonque (Nm)		5 ~ 14		5 ~ 14	
Protection Degree		IP67, IK10		IP67, IK10	
Material	Shade	PC		PC	
	Case	Stainless Steel / Nickel-plated Brass		Stainless Steel / Nickel-plated Brass	
	Base	PBT		PBT	
Lamp Parameters	Type	LED Flat dot		LED Flat dot	
	Rated Voltage (V)	2 / 6 / 12 / 24 / 36	110 / 220	2 / 6 / 12 / 24 / 36	110 / 220
	Rated Current (mA)	~15	~3	~15	~3
	Color	R G Y O B W		R G Y O B W	
	Life (hours)	50.000		50.000	

## GQ16 - Screw Terminal

DIOH-GQ16B - 10 / ◎  
Domed

DIOH-GQ16F - 10 / ◎  
Flat Round

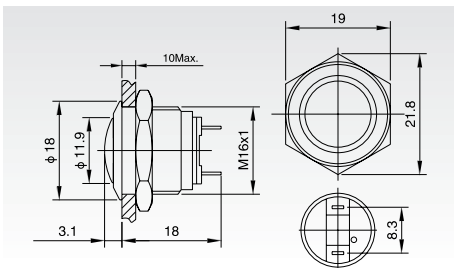
DIOH-GQ16H - 10 / ◎  
High Round



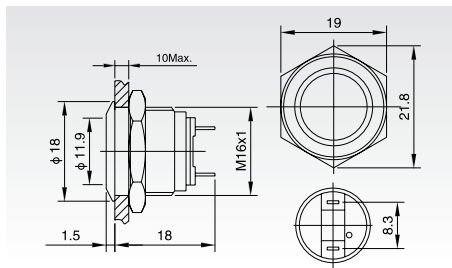
	DIOH-GQ16 B - 10 / ◎	F - 10 / ◎	H - 10 / ◎
Terminal Type	Screw Terminal	Screw Terminal	Screw Terminal
Switch Type	X: Two Terminal breakpoints slow moving contact		
Switch Specifications	2A / 36VDC	2A / 36VDC	2A / 36VDC
Contact Resistance (mΩ)	≤ 50	≤ 50	≤ 50
Insulation Resistance (MΩ)	≥ 1000	≥ 1000	≥ 1000
Dielectric Strength (VAC)	2000	2000	2000
Operating Temperature	-20°C ~ +55°C	-20°C ~ +55°C	-20°C ~ +55°C
Mechanical Life (times)	> 1.000.000	> 1.000.000	> 1.000.000
Electrical Life (times)	> 200.000	> 200.000	> 200.000
Panel Thickness (mm)	1 ~ 6	1 ~ 6	1 ~ 6
Tonque (Nm)	5 ~ 14	5 ~ 14	5 ~ 14
Operating Pressure (N)	about 4	about 4	about 4
Operating Stroke (mm)	about 1.5	about 1.5	about 1.5
Protection Degree	IP65, IK08	IP65, IK08	IP65, IK08
Material	Contact	Silver Alloy	Silver Alloy
	Button	Stainless Steel (Mirror / Spiral Pattern)	Stainless Steel (Mirror / Spiral Pattern)
	Case	Stainless Steel / Nickel-plated Brass	Stainless Steel / Nickel-plated Brass
	Base	PBT	PBT

## GQ16 - Pin Terminal

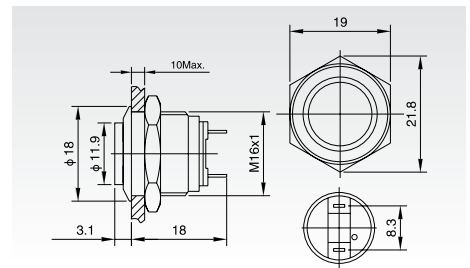
DIOH-GQ16B - 10 / J / ☉  
Domed



DIOH-GQ16F - 10 / J / ☉  
Flat Round



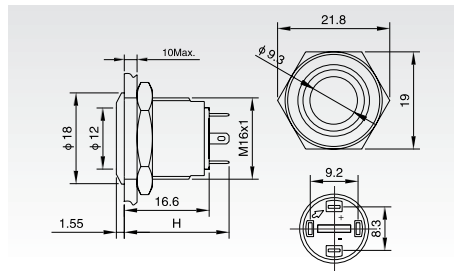
DIOH-GQ16H - 10 / J / ☉  
High Round



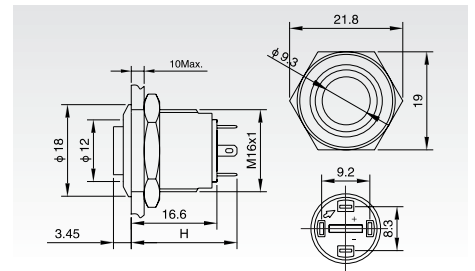
DIOH-GQ16	B - 10 / J / ☉	F - 10 / J / ☉	H - 10 / J / ☉
Terminal Type	Pin Terminal (2.0 x 0.5mm)	Pin Terminal (2.0 x 0.5mm)	Pin Terminal (2.0 x 0.5mm)
Switch Type	X: Two Terminal breakpoints slow moving contact		
Switch Specifications	2A / 36VDC	2A / 36VDC	2A / 36VDC
Contact Resistance (mΩ)	≤ 50	≤ 50	≤ 50
Insulation Resistance (MΩ)	≥ 1000	≥ 1000	≥ 1000
Dielectric Strength (VAC)	2000	2000	2000
Operating Temperature	-20°C ~ +55°C	-20°C ~ +55°C	-20°C ~ +55°C
Mechanical Life (times)	> 1.000.000	> 1.000.000	> 1.000.000
Electrical Life (times)	> 200.000	> 200.000	> 200.000
Panel Thickness (mm)	1 ~ 6	1 ~ 6	1 ~ 6
Tonque (Nm)	5 ~ 14	5 ~ 14	5 ~ 14
Operating Pressure (N)	about 4	about 4	about 4
Operating Stroke (mm)	about 1.5	about 1.5	about 1.5
Protection Degree	IP65, IK08	IP65, IK08	IP65, IK08
Material	Contact	Silver Alloy	Silver Alloy
	Button	Stainless Steel (Mirror / Spiral Pattern)	Stainless Steel (Mirror / Spiral Pattern)
	Case	Stainless Steel / Nickel-plated Brass	Stainless Steel / Nickel-plated Brass
	Base	PBT	PBT

## GQ16 - Ring-illuminated

DIOH-GQ16F - 10E/J/Δ/▲/◎  
Flat Round



DIOH-GQ16H - 10E/J/Δ/▲/◎  
High Round

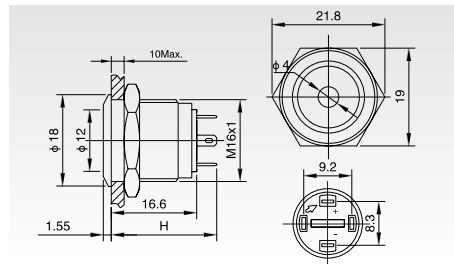


DIOH-GQ16		F - 10E / J / Δ / ▲ / ◎	H - 10E / J / Δ / ▲ / ◎
Terminal Type		Pin Terminal (2.0 x 0.5mm)	Pin Terminal (2.0 x 0.5mm)
Switch Type		X: Two Terminal breakpoints slow moving contact	
Switch Specifications		2A / 36VDC	2A / 36VDC
Contact Resistance (mΩ)		≤ 50	≤ 50
Insulation Resistance (MΩ)		≥ 1000	≥ 1000
Dielectric Strength (VAC)		2000	2000
Operating Temperature		-20°C ~ +55°C	-20°C ~ +55°C
Mechanical Life (times)		> 1.000.000	> 1.000.000
Electrical Life (times)		> 200.000	> 200.000
Panel Thickness (mm)		1 ~ 10	1 ~ 10
Torque (Nm)		5 ~ 14	5 ~ 14
Operating Pressure (N)		about 4	about 4
Operating Stroke (mm)		about 1.5	about 1.5
Protection Degree		IP65, IK08	IP65, IK08
Material	Contact	Silver Alloy	Silver Alloy
	Button	Stainless Steel / (Mirror / Spiral Pattern)	Stainless Steel / (Mirror / Spiral Pattern)
	Case	Stainless Steel / Nickel Plated Brass	Stainless Steel / Nickel Plated Brass
	Base	PBT	PBT
Lamp Parameters	Type	Ring-illuminated LED	Ring-illuminated LED
	Rated Voltage (V)	2 / 6 / 12 / 24 / 36	2 / 6 / 12 / 24 / 36
	Color	<b>R</b> <b>G</b> <b>Y</b> <b>O</b> <b>B</b> <b>W</b>	<b>R</b> <b>G</b> <b>Y</b> <b>O</b> <b>B</b> <b>W</b>
	Life	50.000	50.000

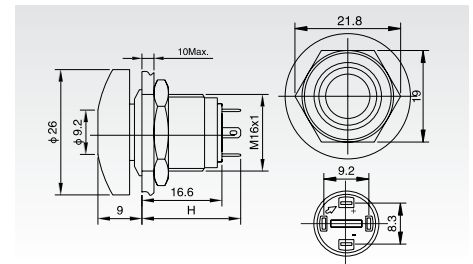
Current Limiting Resistor Configuration Table	Rated Voltage		6V	12V	24V	36V	Formula $R = \frac{U-U_e}{I_e}$
	Current Limiting Resistor	<b>R</b> <b>Y</b> <b>O</b>	210 Ω, 1/4W	510 Ω, 1/2W	1.2k Ω, 3/4W	2.2k Ω, 1W	
	<b>G</b> <b>B</b> <b>W</b>	160 Ω, 1/4W	460 Ω, 1/2W	1.2k Ω, 3/4W	2.2k Ω, 1W		

## GQ16 - Dot-illuminated

DIOH-GQ16F - 10D/J/Δ/▲/◎  
Flat Round



DIOH-GQ16M - 10D/J/Δ/▲/◎  
Mushroom Dot

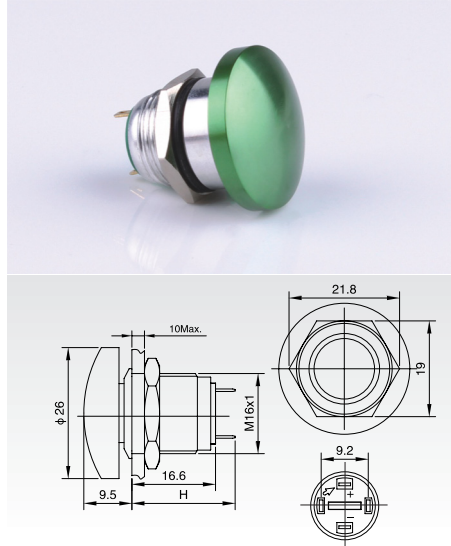


DIOH-GQ16		F - 10D / J / Δ / ▲ / ◎	M - 10D / J / Δ / ▲ / ◎
Terminal Type		Pin Terminal (2.0 x 0.5mm)	Pin Terminal (2.0 x 0.5mm)
Switch Type		X: Two Terminal breakpoints slow moving contact	
Switch Specifications		2A / 36VDC	2A / 36VDC
Contact Resistance (mΩ)		≤ 50	≤ 50
Insulation Resistance (MΩ)		≥ 1000	≥ 1000
Dielectric Strength (VAC)		2000	2000
Operating Temperature		-20°C ~ +55°C	-20°C ~ +55°C
Mechanical Life (times)		> 1.000.000	> 1.000.000
Electrical Life (times)		> 200.000	> 200.000
Panel Thickness (mm)		1 ~ 10	1 ~ 10
Tonque (Nm)		5 ~ 14	5 ~ 14
Operating Pressure (N)		about 4	about 4
Operating Stroke (mm)		about 1.5	about 1.5
Protection Degree		IP65, IK08	IP65, IK08
Material	Contact	Silver Alloy	Silver Alloy
	Button	Stainless Steel / (Mirror / Spiral Pattern)	Zn-Al Alloy (Colorful Head)
	Case	Stainless Steel / Nickel Plated Brass	Zn-Al Alloy (Silver white)
	Base	PBT	PBT
Lamp Parameters	Type	Dot-illuminated LED	Dot-illuminated LED
	Rated Voltage (V)	2 / 6 / 12 / 24 / 36	2 / 6 / 12 / 24 / 36
	Color	<b>R</b> <b>G</b> <b>Y</b> <b>O</b> <b>B</b> <b>W</b>	<b>R</b> <b>G</b> <b>Y</b> <b>O</b> <b>B</b> <b>W</b>
	Life	50.000	50.000

Current Limiting Resistor Configuration Table	Rated Voltage		6V	12V	24V	36V	Formula $R = \frac{U-U_e}{I_e}$
	Current Limiting Resistor	<b>R</b> <b>Y</b> <b>O</b>	210 Ω, 1/4W	510 Ω, 1/2W	1.2k Ω, 3/4W	2.2k Ω, 1W	
	<b>G</b> <b>B</b> <b>W</b>	160 Ω, 1/4W	460 Ω, 1/2W	1.2k Ω, 3/4W	2.2k Ω, 1W		

## GQ16 - Mushroom Switch

DIOH-GQ16M - 10 / J / T / ★  
Mushroom Switch



DIOH-GQ16		M - 10 / J / T / ★
Terminal Type	Pin Terminal (2.0 x 0.5mm)	
Switch Type	X: Two Terminal breakpoints slow moving contact	
Switch Specifications	2A / 36VDC	
Contact Resistance (mΩ)	≤ 50	
Insulation Resistance (MΩ)	≥ 1000	
Dielectric Strength (VAC)	2000	
Operating Temperature	-20°C ~ +55°C	
Mechanical Life (times)	> 1.000.000	
Electrical Life (times)	> 200.000	
Panel Thickness (mm)	1 ~ 10	
Tonque (Nm)	5 ~ 14	
Operating Pressure (N)	about 4	
Operating Stroke (mm)	about 1.5	
Protection Degree	IP65, IK08	
	Contact	Silver Alloy
	Button	Zn-Al Alloy (Colorful Head)
	Case	Zn-Al Alloy (Silver white)
	Base	PBT