

Order-Code:

DIOH-GQ ★ ■ - □ / ◇ / ◆ / △ / ▲ / ◎ / ☆

★	■	□	◇	◆	△	▲	◎	★
Ø Einbau- durchmesser Mounting Hole	Tastenform Front Shape	Kontaktkonfi- guration Contact confi- guration	Lichttyp Lamp Type	Anschluss- typ Terminal Type	Farbe LED Color LED	Betriebsspan- nung LED Lamp Voltage (VDC / AC)	Material	Farbe des Tasters / Color of Push button's head or case
8mm 12mm 16mm 19mm 22mm	F: Flach rund H: Erhöht rund C: Konkav B: Gewölbt F: Flat round H: High round C: Concave B: Domed	10: 1NO 11: 1NO 1NC 22: 2NO 2NC * 1NC auf Anfrage	D: Punkt E: Ring Em: Buzzer mit LED D: dot E: ring Em: buzzer with illumina- tion	J: Lötanschluss ohne Buchstaben: Schraubklem- menanschluss J: Pin Terminal No letter: Screw Terminal	R: Rot / Red G: Grün / Green Y: Gelb / Yellow O: Orange B: Blau / Blue W: Weiß / White	6 12 24 36 110 220 andere auf Anfrage / other on request	N: Messing vernickelt G: Messing vergoldet S: Edelstahl A: Zn-Al Legierung (Schwarz) T: Zn-Al Legierung (Weißsilber) PC: technischer Kunststoff N: Nickel-Plated Brass G: Gold-Plated Brass S: Stainless Steel A: Zn-Al Alloy (black) T: Zn-Al Alloy (silver white)	R: Rot / Red G: Grün / Green Y: Gelb / Yellow O: Orange B: Blau / Blue W: Weiß / White N: Schwarz / Black

Einbau / Installation



Oberflächen / Surface



Edelstahl /
Spiegeloberfläche

Stainless Steel /
Mirror surface



Edelstahl /
Gebürstete Oberfläche

Stainless Steel /
Sprial Pattern Effect

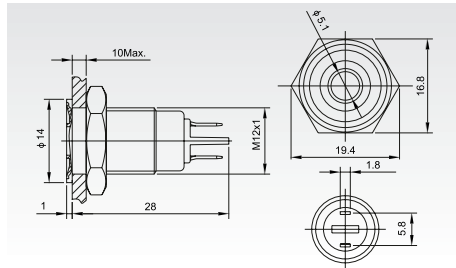


Gravierung der Taste
auf Wunsch möglich

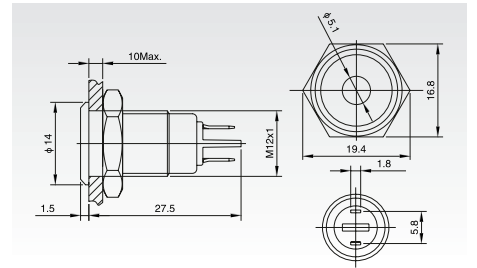
Labelling on request

GQ12 - Dot-illuminated

DIOH-GQ12C - D / Δ / ▲ / N
Signal Lamp - flat concave



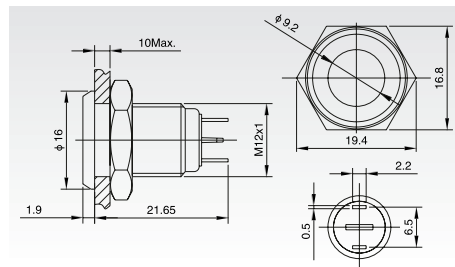
DIOH-GQ12F - D / Δ / ▲ / N
Signal Lamp



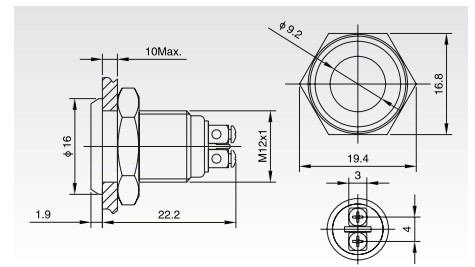
DIOH-GQ12		C - D / Δ / ▲ / N		F - D / Δ / ▲ / N	
Terminal Type		Pin Terminal (1.8 x 0.4mm)		Pin Terminal (1.8 x 0.4mm)	
Dielectric Strength (VAC)		2000		2000	
Operating Temperature		-20°C ~ +55°C		-20°C ~ +55°C	
Panel Thickness (mm)		1 ~ 10		1 ~ 10	
Tonque (Nm)		5 ~ 14		5 ~ 14	
Protection Degree		IP67, IK10		IP67, IK10	
Material	Shade	PC		PC	
	Case	Nickel-plated Brass		Nickel-plated Brass	
	Base	PBT		PBT	
Lamp Parameters	Type	LED dot-illuminated, flat-concave		LED dot-illuminated	
	Rated Voltage (V)	2 / 6 / 12 / 24 / 36	110 / 220	2 / 6 / 12 / 24 / 36	110 / 220
	Rated Current (mA)	~15	~3	~15	~3
	Color	R G Y O B W		R G Y O B W	
	Life (hours)	50.000		50.000	

GQ12 - Signal Lamp

DIOH-GQ12F - D / J / Δ / ▲ / ◎
Signal Lamp



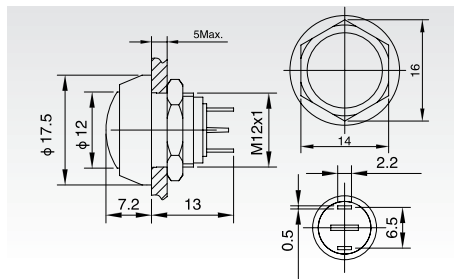
DIOH-GQ12F - D / Δ / ▲ / ◎
Signal Lamp



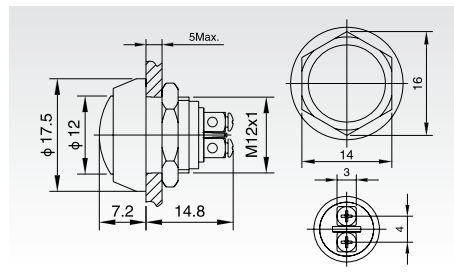
DIOH-GQ12F -		D / J / Δ / ▲ / ◎		D / Δ / ▲ / ◎	
Terminal Type		Pin Terminal (2.0 x 0.5mm)		Screw Terminal	
Dielectric Strength (VAC)		2000		2000	
Operating Temperature		-20°C ~ +55°C		-20°C ~ +55°C	
Panel Thickness (mm)		1 ~ 10		1 ~ 10	
Tonque (Nm)		5 ~ 14		5 ~ 14	
Protection Degree		IP67, IK10		IP67, IK10	
Material	Shade	PC		PC	
	Case	Stainless Steel / Nickel-plated Brass		Stainless Steel / Nickel-plated Brass	
	Base	PBT		PBT	
Lamp Parameters	Type	LED Flat dot		LED Flat dot	
	Rated Voltage (V)	2 / 6 / 12 / 24 / 36	110 / 220	2 / 6 / 12 / 24 / 36	110 / 220
	Rated Current (mA)	~15	~3	~15	~3
	Color	R G Y O B W		R G Y O B W	
	Life (hours)	50.000		50.000	

GQ12 - Push Buttons

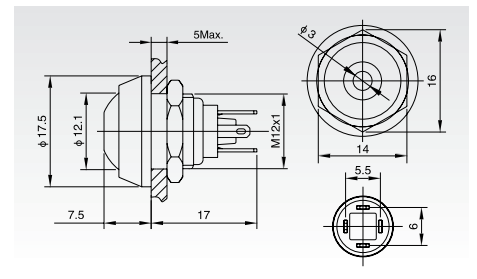
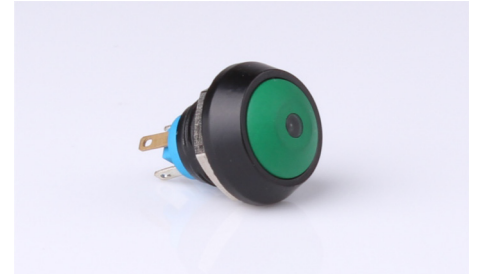
DIOH-GQ12B - 10 / J / A / ★
Domed



DIOH-GQ12B - 10 / A / ★
Domed



DIOH-GQ12B - 10D/J/Δ/▲/A/★
Domed

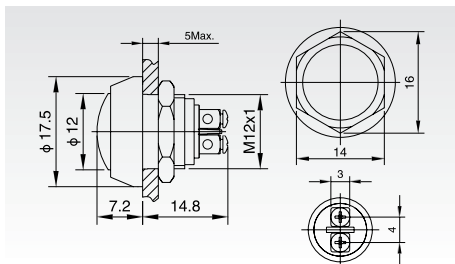


DIOH-GQ12B-		10 / J / A / ★	10 / A / ★	10D/J/Δ/▲/A/★
Terminal Type		Pin Terminal (2.0 x 0.5mm)	Screw Terminal	Pin Terminal (2.0 x 0.5mm)
Switch Type		X: Two Terminal breakpoints slow moving contact		
Switch Specifications		2A / 36VDC	2A / 36VDC	2A / 36VDC
Contact Resistance (mΩ)		≤ 50	≤ 50	≤ 50
Insulation Resistance (MΩ)		≥ 1000	≥ 1000	≥ 1000
Dielectric Strength (VAC)		2000	2000	2000
Operating Temperature		-20°C ~ +55°C	-20°C ~ +55°C	-20°C ~ +55°C
Mechanical Life (times)		> 1.000.000	> 1.000.000	> 1.000.000
Electrical Life (times)		> 200.000	> 200.000	> 200.000
Panel Thickness (mm)		1 ~ 5	1 ~ 5	1 ~ 10
Tonque (Nm)		5 ~ 14	5 ~ 14	5 ~ 14
Operating Pressure (N)		about 5	about 5	about 5
Operating Stroke (mm)		about 2.5	about 2.5	about 2.5
Protection Degree		IP65, IK08	IP65, IK08	IP65, IK08
Material	Contact	Silver Alloy	Silver Alloy	Silver Alloy
	Button	PBT	PBT	PBT
	Case	Zn-Al Alloy	Zn-Al Alloy	Zn-Al Alloy
	Base	PBT	PBT	PBT
Head Color		R G Y O B W	R G Y O B W	R G Y O B W

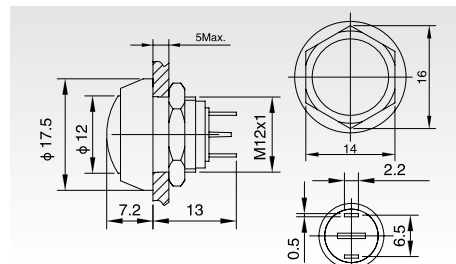
Metal Push Button

GQ12 - not-illuminated

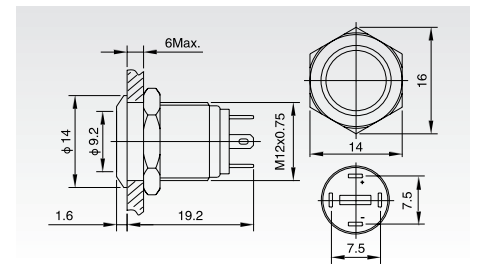
DIOH-GQ12B - 10 / ☉
Domed



DIOH-GQ12B - 10 / J / ☉
Domed



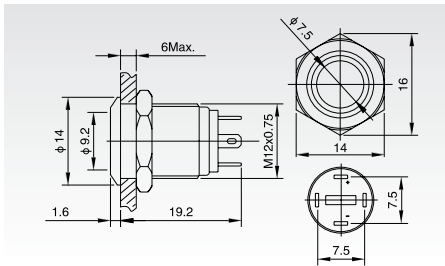
DIOH-GQ12F - 10 / J / ☉
Flat Round



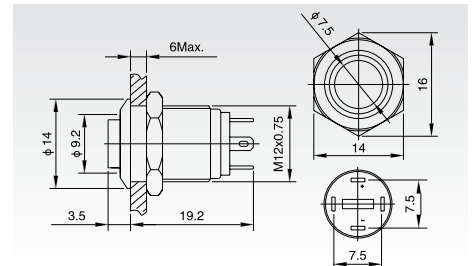
	DIOH-GQ12 B - 10 / ☉	B - 10 / J / ☉	F - 10 / J / ☉	
Terminal Type	Screw Terminal	Pin Terminal (2.0 x 0.5mm)	Pin Terminal (2.0 x 0.5mm)	
Switch Type	X: Two Terminal breakpoints slow moving contact			
Switch Specifications	2A / 36VDC	2A / 36VDC	2A / 36VDC	
Contact Resistance (mΩ)	≤ 50	≤ 50	≤ 50	
Insulation Resistance (MΩ)	≥ 1000	≥ 1000	≥ 1000	
Dielectric Strength (VAC)	2000	2000	2000	
Operating Temperature	-20°C ~ +55°C	-20°C ~ +55°C	-20°C ~ +55°C	
Mechanical Life (times)	> 1.000.000	> 1.000.000	> 1.000.000	
Electrical Life (times)	> 200.000	> 200.000	> 200.000	
Panel Thickness (mm)	1 ~ 5	1 ~ 5	1 ~ 10	
Tonque (Nm)	5 ~ 14	5 ~ 14	5 ~ 14	
Operating Pressure (N)	about 5	about 5	about 5	
Operating Stroke (mm)	about 2.5	about 2.5	about 1.8	
Protection Degree	IP65, IK08	IP65, IK08	IP65, IK08	
Material	Contact	Silver Alloy	Silver Alloy	
	Button	Stainless Steel (Mirror / Spiral Pattern)	Stainless Steel (Mirror / Spiral Pattern)	PBT
	Case	Stainless Steel / Nickel-plated Brass	Stainless Steel / Nickel-plated Brass	Stainless Steel / Nickel-plated Brass
	Base	PBT	PBT	PBT

GQ12 - Ring-illuminated

DIOH-GQ12F - 10E/J/Δ/▲/◎
Flat Round



DIOH-GQ12H - 10E/J/Δ/▲/◎
High Round



DIOH-GQ12-		F - 10E/J/Δ/▲/◎	H - 10E/J/Δ/▲/◎
Terminal Type		Pin Terminal (2.0 x 0.5mm)	Pin Terminal (2.0 x 0.5mm)
Switch Type		X: Two Terminal breakpoints slow moving contact	
Switch Specifications		2A / 36VDC	2A / 36VDC
Contact Resistance (mΩ)		≤ 50	≤ 50
Insulation Resistance (MΩ)		≥ 1000	≥ 1000
Dielectric Strength (VAC)		2000	2000
Operating Temperature		-20°C ~ +55°C	-20°C ~ +55°C
Mechanical Life (times)		> 1.000.000	> 1.000.000
Electrical Life (times)		> 200.000	> 200.000
Panel Thickness (mm)		1 ~ 10	1 ~ 10
Tonque (Nm)		5 ~ 14	5 ~ 14
Operating Pressure (N)		about 4	about 4
Operating Stroke (mm)		about 1.8	about 1.8
Protection Degree		IP65, IK08	IP65, IK08
Material	Contact	Silver Alloy	Silver Alloy
	Button	Stainless Steel / (Mirror / Spiral Pattern)	Stainless Steel / (Mirror / Spiral Pattern)
	Case	Stainless Steel / Nickel Plated Brass	Stainless Steel / Nickel Plated Brass
	Base	PBT	PBT
Lamp Parameters	Type	Ring-illuminated LED	Ring-illuminated LED
	Rated Voltage (V)	2 / 6 / 12 / 24 / 36	2 / 6 / 12 / 24 / 36
	Color	R G Y O B W	R G Y O B W
	Life	50.000	50.000

Current Limiting Resistor Configuration Table	Rated Voltage		6V	12V	24V	36V	Formula $R = \frac{U-U_e}{I_e}$
	Current Limiting Resistor	R Y O	210 Ω, 1/4W	510 Ω, 1/2W	1.2k Ω, 3/4W	2.2k Ω, 1W	
	G B W	160 Ω, 1/4W	460 Ω, 1/2W	1.2k Ω, 3/4W	2.2k Ω, 1W		