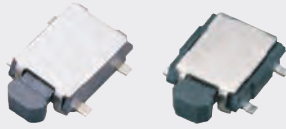


# NTC315 Series

■ Features

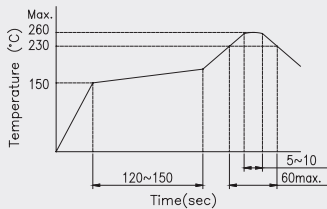
■ Lead Free ■ HF ■ RoHS

- Horizontal direction.



Rating (max)	DC12V 50mA
Contact Resistance	500mΩ max.
Insulation Resistance	DC500V-100MΩ min.
Withstand Voltage	AC250V - 1 minute
Stroke	0.2 ± 0.12 mm

Recommended Reflow Soldering Profile



Recommended Manual Soldering Profile

	Temperature	Time
Manual Soldering Temperature	350 °C (max.)	3 Sec. (max.)

The solder iron and solder shall be applied at a distance of 1.91 mm to 2.54 mm from the plastic housing.

Operating Force & Durability

180 ± 80 gf	50,000 cycles
220 ± 50gf	
350 ± 80gf	

■ SMT- G Type Horizontal 7.15L x 4.0W x 1.7H

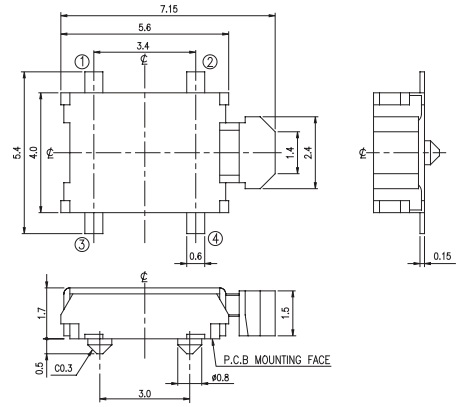
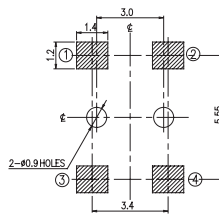
■ Outline Drawing

Product No.	Boss	Package
NTC315-AC1G-A220T	Without	3,300 Pcs/Reel
NTC315-AD1G-A220T	With	

Schematic



P.C.B Layout



General Tolerance : ±0.2mm.

■ SMT- G Type Horizontal 7.15L x 4.0W x 3.25H

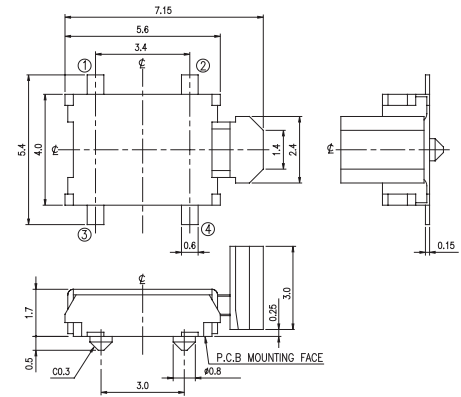
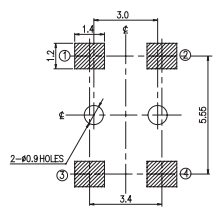
■ Outline Drawing

Product No.	Boss	Package
NTC315-AD1G-C220T	With	1,800 Pcs/Reel

Schematic



P.C.B Layout



General Tolerance : ±0.2mm.

■ SMT- G Type Horizontal 7.15L x 4.6W x 1.8 H

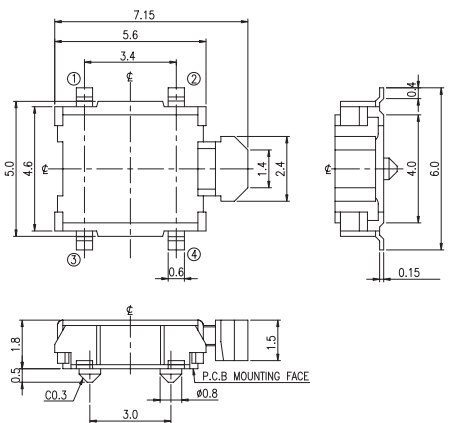
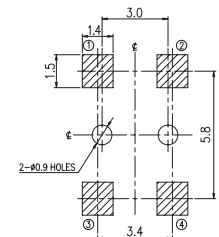
■ Outline Drawing

Product No.	Boss	Package
NTC315-AE1G-A180T	With	2,000 Pcs/Reel
NTC315-AE1G-A350T		

Schematic



P.C.B Layout



General Tolerance : ±0.2mm.