

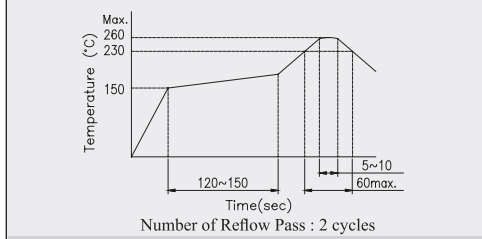
NTC303 Series

■ Features

- Horizontal direction.



Rating (max)	DC12V 50mA
Contact Resistance	500mΩ max.
Insulation Resistance	DC500V-100MΩ min.
Withstand Voltage	AC250V - 1 minute



Recommended Manual Soldering Profile

	Temperature	Time
Manual Soldering Temperature	350 °C (max.)	3 Sec.(max.)

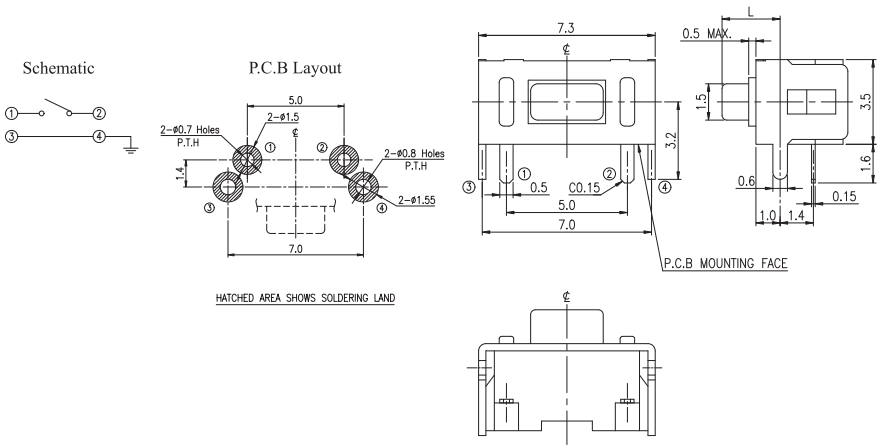
The solder iron and solder shall be applied at a distance of 1.91 mm to 2.54 mm from the plastic housing.

■ SMT- T Type Horizontal 7.3L x __W x 3.5H
[Without Ground Terminal]

Stroke 0.25 ± 0.1mm

Product No.	L	Force	Durability	Package
NTC303-BZ1T-L180T	1.7	180 ± 50gf	50,000 cycles	850 Pcs/Reel
NTC303-BZ1T-M180T	2.4			
NTC303-BZ1T-P180T	4.0			
NTC303-BZ1T-L250T	1.7	250 ± 50gf	50,000 cycles	
NTC303-BZ1T-M250T	2.4			

■ Outline Drawing



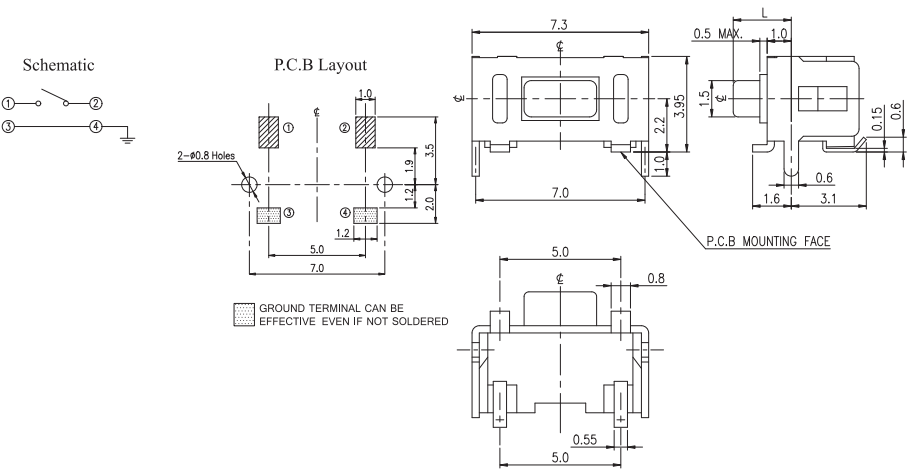
General Tolerance : ±0.2mm.

■ SMT- J Type Horizontal 7.3L x __W x 3.95H
[With Ground Terminal]

Stroke 0.25 ± 0.1mm

Product No.	L	Force	Durability	Package
NTC303-CY1J-L180T	1.7	180 ± 50gf	50,000 cycles	1,000 Pcs/Reel
NTC303-CY1J-M180T	2.4			750 Pcs/Reel
NTC303-CY1J-P180T	4.0			
NTC303-CY1J-L250T	1.7	250 ± 50gf	50,000 cycles	1,000 Pcs/Reel
NTC303-CY1J-M250T	2.4			

■ Outline Drawing



General Tolerance : ±0.2mm.

SMT- J Type Horizontal

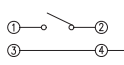
7.3L x __W x 4.25H
[With Ground Terminal]

Outline Drawing

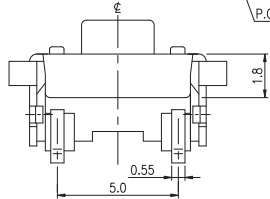
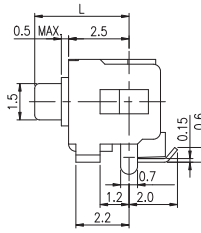
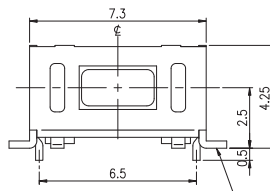
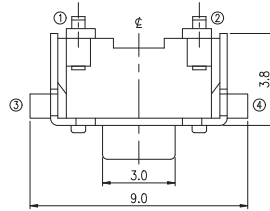
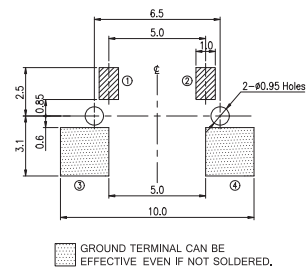
Stroke $0.25 \pm 0.1\text{mm}$

Product No.	L	Force	Durability	Package
NTC303-DX1J-L180T	3.2			
NTC303-DX1J-M180T	3.9	180 ± 50gf	50,000 cycles	1,000 Pcs/Reel
NTC303-DX1J-N180T	4.25			

Schematic



P.C.B Layout



General Tolerance : ±0.2mm.