

NTC223 Series

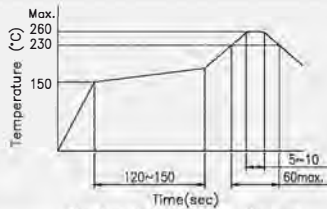
■ Features

- Waterproof type.
- Grade:IP67.



| | |
|-----------------------|-------------------|
| Waterproof Grade | IP 67 |
| Rating (max) | DC12V 50mA |
| Contact Resistance | 500mΩ max. |
| Insulation Resistance | DC500V-100MΩ min. |
| Withstand Voltage | AC250V - 1 minute |
| Stroke | 0.15 ± 0.1 mm |

Recommended Reflow Soldering Profile



Number of Reflow Pass : 2 cycles

Recommended Manual Soldering Profile

| | Temperature | Time |
|------------------------------|---------------|--------------|
| Manual Soldering Temperature | 350 °C (max.) | 3 Sec.(max.) |

The solder iron and solder shall be applied at a distance of 1.91 mm to 2.54 mm from the plastic housing.

Operating Force & Durability

| | |
|------------|----------------|
| 100 ± 50gf | 100,000 cycles |
| 160 ± 50gf | 300,000 cycles |
| 240 ± 70gf | 200,000 cycles |

■ Waterproof

■ Lead Free

■ HF

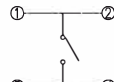
■ RoHS

■ SMT- J Type Vertical

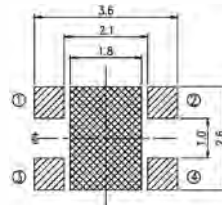
3.0L x 2.6W x 0.65H

| Product No. | Package |
|-------------------|----------------|
| NTC223-XC1J-B100T | 8,000 Pcs/Reel |

Schematic



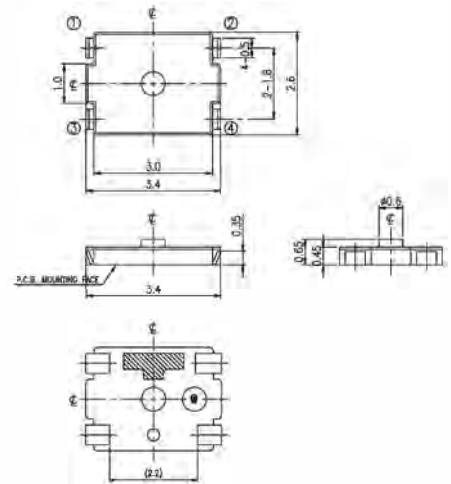
P.C.B Layout



HATCHED AREA SHOWS SOLDERING LAND

Terminal is exposed at area.
Any land pattern or via should be prevented at area.

■ Outline Drawing



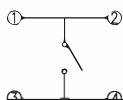
General Tolerance : ±0.2mm.

■ SMT- J Type Vertical

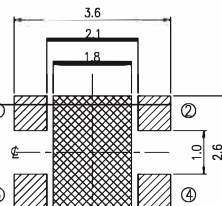
3.0L x 2.6W x 0.65H

| Product No. | Package |
|--------------------|----------------|
| NTC223-XC1J-B160TX | 8,000 Pcs/Reel |

Schematic



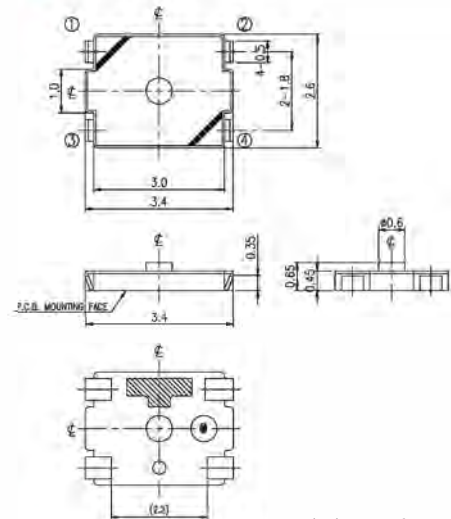
P.C.B Layout



HATCHED AREA SHOWS SOLDERING LAND

Terminal is exposed at area.
Any land pattern or via should be prevented at area.

■ Outline Drawing



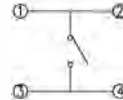
General Tolerance : ±0.2mm.

■ SMT- J Type Vertical

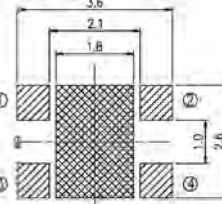
3.0L x 2.6W x 0.7H

| Product No. | Package |
|-------------------|----------------|
| NTC223-XC1J-B340T | 8,000 Pcs/Reel |

Schematic



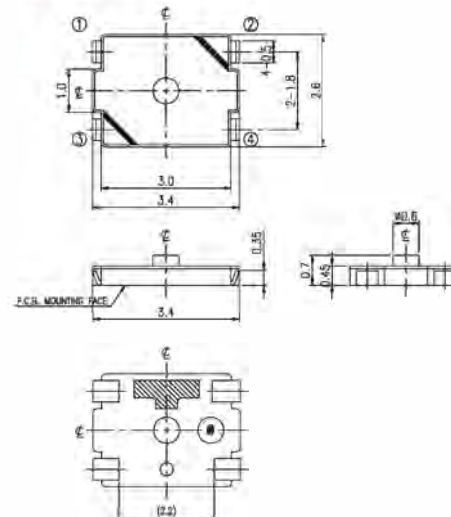
P.C.B Layout



HATCHED AREA SHOWS SOLDERING LAND

Terminal is exposed at area.
Any land pattern or via should be prevented at area.

■ Outline Drawing



General Tolerance : ±0.2mm.