

NTC045 Series

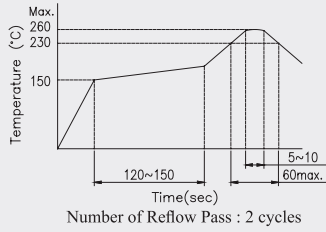
Features

- Tall height.



| | |
|-----------------------|--------------------|
| Rating (max) | DC12V 50mA |
| Contact Resistance | 100mΩ max. |
| Insulation Resistance | DC500V -100MΩ min. |
| Withstand Voltage | AC250V - 1 minute |
| Stroke | 0.3 ± 0.1 mm |

Recommended Reflow Soldering Profile



Recommended Wave Soldering Profile

| Parameters | Lead-Free Specification |
|-------------------------|-------------------------|
| Preheating Time | 60 sec max. |
| Preheating Temperature | 100°C max. |
| Continuous Dipping Time | 3~5 sec max. |
| Soldering Temperature | 260°C max. |

Recommended Manual Soldering Profile

| | Temperature | Time |
|------------------------------|---------------|--------------|
| Manual Soldering Temperature | 350 °C (max.) | 3 Sec.(max.) |

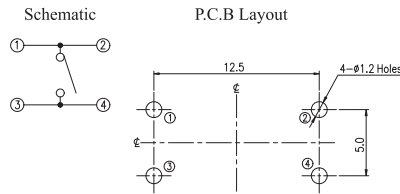
The solder iron and solder shall be applied at a distance of 1.91 mm to 2.54 mm from the plastic housing.

Operating Force & Durability

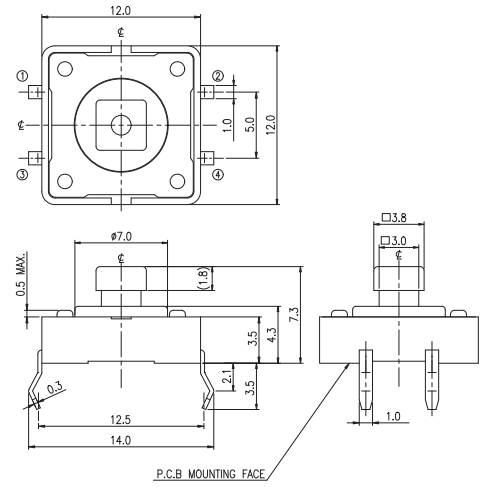
| | |
|------------|------------------|
| 120 ± 50gf | 1,000,000 cycles |
| 160 ± 50gf | 500,000 cycles |
| 260 ± 70gf | 300,000 cycles |

DIP-D Type Vertical 12.0L x 12.0W x 7.3H

| Product No. | Package |
|------------------|---------|
| NTC045-AD1D-A__B | Bulk |



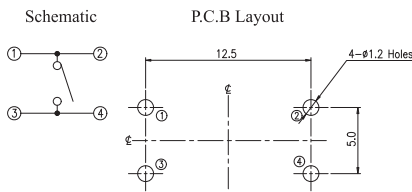
Outline Drawing



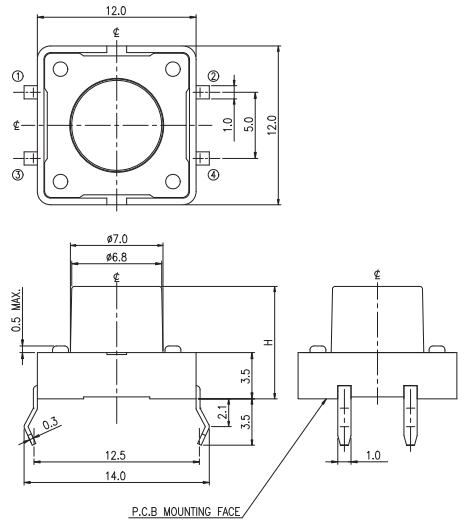
General Tolerance : ±0.2mm.

DIP-D Type Vertical 12.0L x 12.0W x _H

| Product No. | H | Package |
|------------------|-----|---------|
| NTC045-AD1D-B__B | 4.3 | Bulk |
| NTC045-AD1D-C__B | 8.5 | |
| NTC045-AD1D-G__B | 7.3 | |



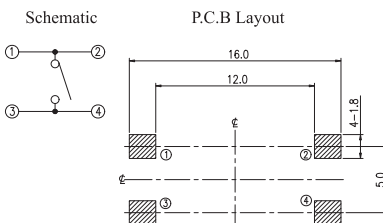
Outline Drawing



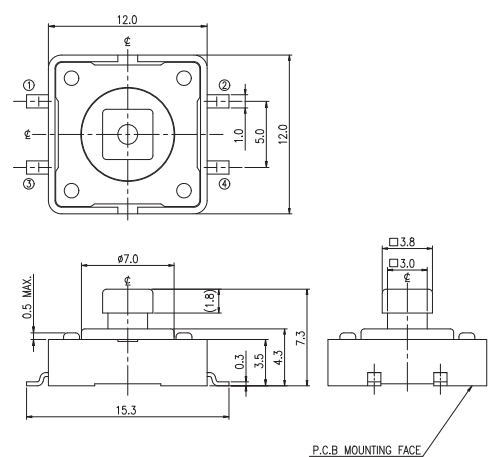
General Tolerance : ±0.2mm.

SMT-G Type Vertical 12.0L x 12.0W x 7.3H

| Product No. | Package |
|------------------|--------------|
| NTC045-AD1G-A__T | 300 Pcs/Reel |



Outline Drawing

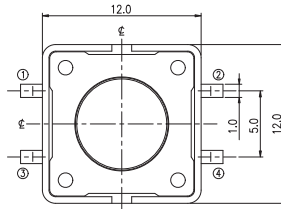


General Tolerance : ±0.2mm.

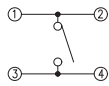
■ SMT-G Type Vertical 12.0L x 12.0W x _H

■ Outline Drawing

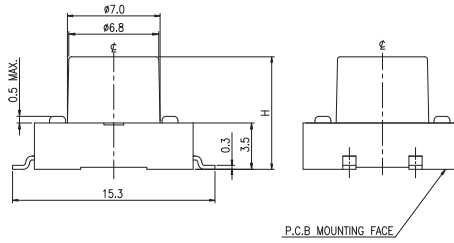
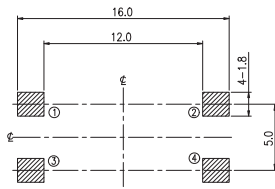
| Product No. | H | Package |
|------------------|-----|--------------|
| NTC045-AD1G-B__T | 4.3 | 300 Pcs/Reel |
| NTC045-AD1G-C__T | 8.5 | |
| NTC045-AD1G-G__T | 7.3 | |



Schematic



P.C.B Layout



P.C.B MOUNTING FACE

General Tolerance : ±0.2mm.