

NTC023 Series

Features

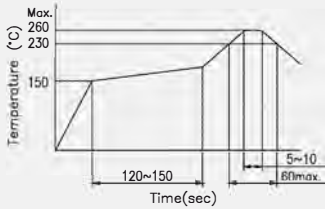
Lead Free HF RoHS

- Compact size 3.0x2.6mm.
- With knob.



Rating (max)	DC12V 50mA
Contact Resistance	500mΩ max.
Insulation Resistance	DC500V-100MΩ min.
Withstand Voltage	AC250V - 1 minute
Stroke	0.15 ± 0.1 mm

Recommended Reflow Soldering Profile



Recommended Manual Soldering Profile

	Temperature	Time
Manual Soldering Temperature	350 °C (max.)	3 Sec. (max.)

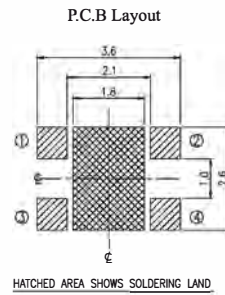
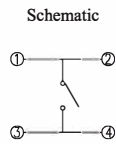
The solder iron and solder shall be applied at a distance of 1.91 mm to 2.54 mm from the plastic housing.

Durability

100 ± 50gf	100,000 cycles
160 ± 50gf	300,000 cycles
240 ± 70gf	200,000 cycles

SMT- J Type Vertical 3.0L x 2.6W x 0.65H

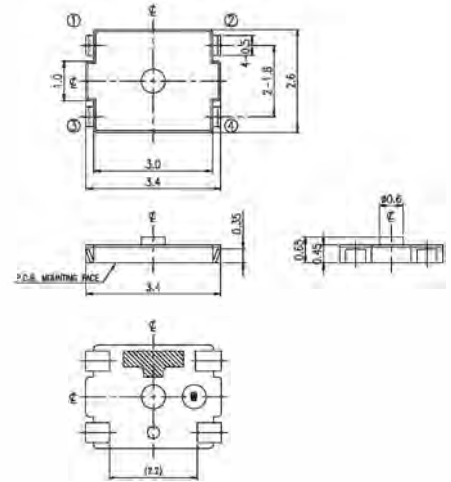
Product No.	Package
NTC023-XC1J-B100T	8,000 Pcs/Reel



HATCHED AREA SHOWS SOLDERING LAND

Terminal is exposed at area.
Any land pattern or via should be prevented at area.

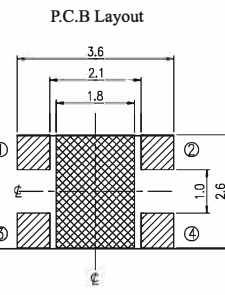
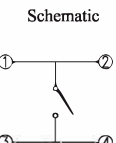
Outline Drawing



General Tolerance : ±0.2mm.

SMT- J Type Vertical 3.0L x 2.6W x 0.65H

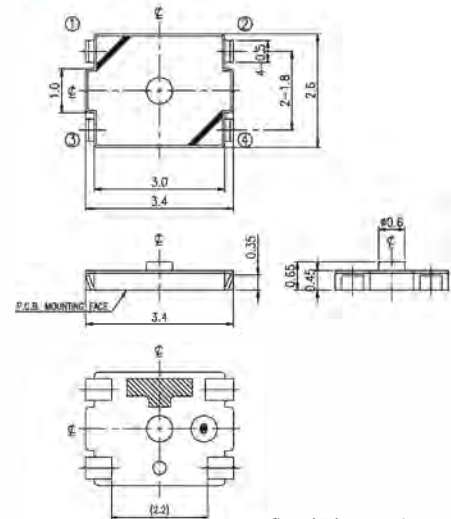
Product No.	Package
NTC023-XC1J-B160TX	8,000 Pcs/Reel



HATCHED AREA SHOWS SOLDERING LAND

Terminal is exposed at area.
Any land pattern or via should be prevented at area.

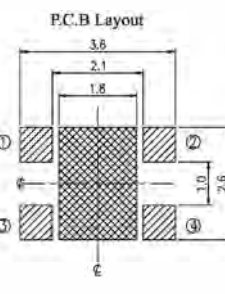
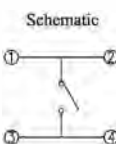
Outline Drawing



General Tolerance : ±0.2mm.

SMT- J Type Vertical 3.0L x 2.6W x 0.7H

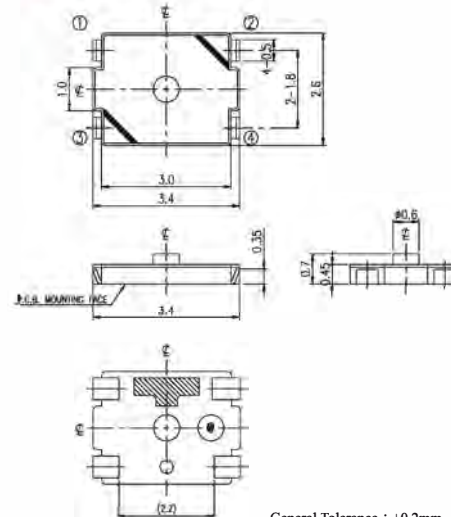
Product No.	Package
NTC023-XC1J-B240T	8,000 Pcs/Reel



HATCHED AREA SHOWS SOLDERING LAND

Terminal is exposed at area.
Any land pattern or via should be prevented at area.

Outline Drawing



General Tolerance : ±0.2mm.