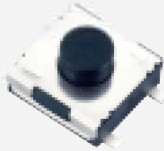


NTC020 Series

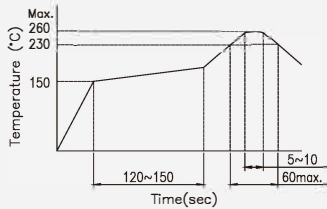
Features

- Wide product variety.
- Heavy operating force.



Rating (max)	DC12V 50mA
Contact Resistance	100mΩ max.
Insulation Resistance	DC500V-100MΩ min.
Withstand Voltage	AC250V - 1 minute
Stroke	0.25 ± 0.1 mm

Recommended Reflow Soldering Profile



Recommended Manual Soldering Profile

	Temperature	Time
Manual Soldering Temperature	350 °C (max.)	3 Sec.(max.)

The solder iron and solder shall be applied at a distance of 1.91 mm to 2.54 mm from the plastic housing.

Operating Force & Durability

160 ± 50gf	1,000,000 cycles
260 ± 50gf	500,000 cycles

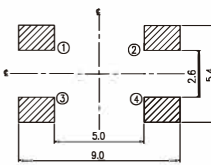
SMT- G Type Vertical 6.2L x 6.2W x H [Without Ground Terminal]

Product No.	H	Package
NTC020-AP1G-A__T	2.5	2,000 Pcs/Reel
NTC020-AP1G-B__T	3.1	
NTC020-AP1G-C__T	3.5	

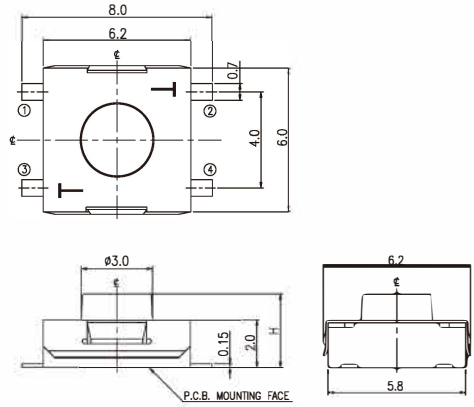
Schematic



P.C.B Layout



Outline Drawing



General Tolerance : ±0.2mm.

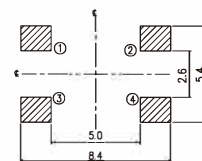
SMT- J Type Vertical 6.2L x 6.2W x H [Without Ground Terminal]

Product No.	H	Package
NTC020-AP1J-A__T	2.5	2,000 Pcs/Reel
NTC020-AP1J-B__T	3.1	
NTC020-AP1J-C__T	3.5	

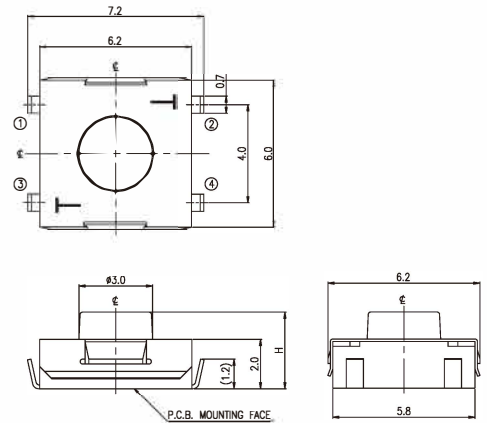
Schematic



P.C.B Layout



Outline Drawing

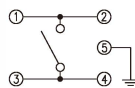


General Tolerance : ±0.2mm.

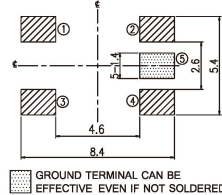
SMT- J Type Vertical 6.2L x 6.2W x H [With Ground Terminal]

Product No.	H	Package
NTC020-CP1J-A__T	2.5	2,200 Pcs/Reel
NTC020-CP1J-B__T	3.1	

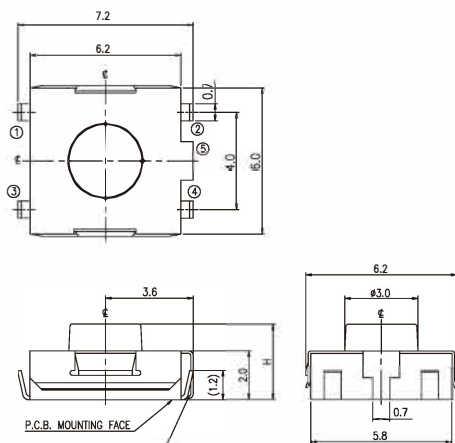
Schematic



P.C.B Layout



Outline Drawing



For fixing or ground function only
Do not form a circuit with terminals.

General Tolerance : ±0.2mm.