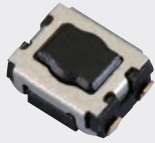


NTC011 Series

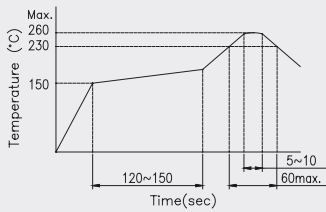
Features

- Compact size 3.5x2.9mm.
- Heavy operating force.



| | |
|-----------------------|-------------------|
| Rating (max) | DC12V 50mA |
| Contact Resistance | 100mΩ max. |
| Insulation Resistance | DC500V-100MΩ min. |
| Withstand Voltage | AC250V - 1 minute |
| Stroke | 0.15 ± 0.1mm |

Recommended Reflow Soldering Profile



Number of Reflow Pass : 2 cycles

Recommended Manual Soldering Profile

| Manual Soldering Temperature | Temperature | Time |
|------------------------------|---------------|---------------|
| | 350 °C (max.) | 3 Sec. (max.) |

The solder iron and solder shall be applied at a distance of 1.91 mm to 2.54 mm from the plastic housing.

Operating Force & Durability

| | |
|-------------|------------------|
| 100 ± 50gf | 1,000,000 cycles |
| 160 ± 50gf | 200,000 cycles |
| 200 ± 50gf | 200,000 cycles |
| 350 ± 50gf | 200,000 cycles |
| 500 ± 100gf | 100,000 cycles |

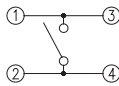
SMT-J Type Vertical

3.5L x 2.9W x 1.7H
[Without Ground Terminal]

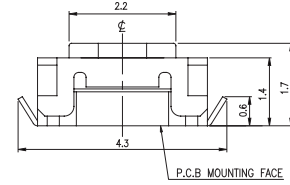
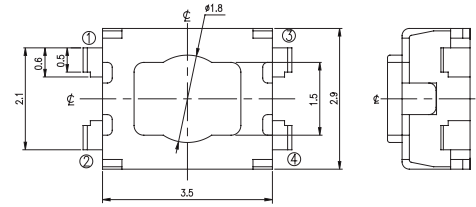
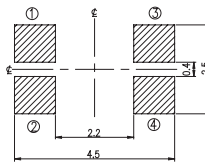
Outline Drawing

| Product No. | Package |
|------------------|----------------|
| NTC011-AA1J-A__T | 4,000 Pcs/Reel |

Schematic



P.C.B Layout



General Tolerance : ±0.2mm.

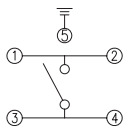
SMT-J Type Vertical

3.5L x 2.9W x 1.7H
[With Ground Terminal]

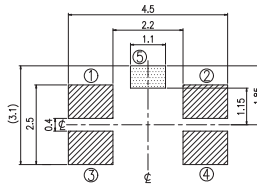
Outline Drawing

| Product No. | Package |
|------------------|----------------|
| NTC011-BA1J-A__T | 4,000 Pcs/Reel |

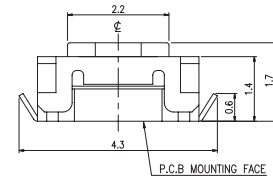
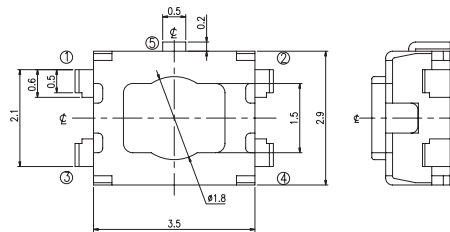
Schematic



P.C.B Layout



GROUND TERMINAL CAN BE EFFECTIVE EVEN IF NOT SOLDERED.



General Tolerance : ±0.2mm.