

NTC010 Series

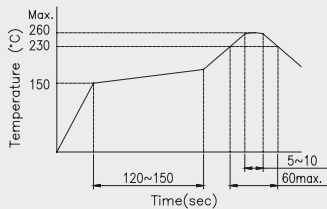
■ Features

- Wide product variety.
- Heavy operating force.



Rating (max)	DC12V 50mA
Contact Resistance	100mΩ max.
Insulation Resistance	DC500V-100MΩ min.
Withstand Voltage	AC250V - 1 minute
Stroke	0.25 ± 0.1 mm

Recommended Reflow Soldering Profile



Recommended Manual Soldering Profile

	Temperature	Time
Manual Soldering Temperature	350 °C (max.)	3 Sec.(max.)

The solder iron and solder shall be applied at a distance of 1.91 mm to 2.54 mm from the plastic housing.

Operating Force & Durability

100 ± 50gf	1,000,000 cycles
160 ± 50gf	1,000,000 cycles
260 ± 50gf	500,000 cycles

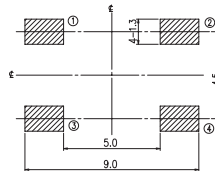
■ SMT- G Type Vertical 6.2L x 6.2W x _H [Without Ground Terminal]

Product No.	H	Package
NTC010-AP1G-A__T	2.5	2,000 Pcs/Reel
NTC010-AP1G-B__T	3.1	1,500 Pcs/Reel
NTC010-AP1G-C__T	3.4	1,300 Pcs/Reel

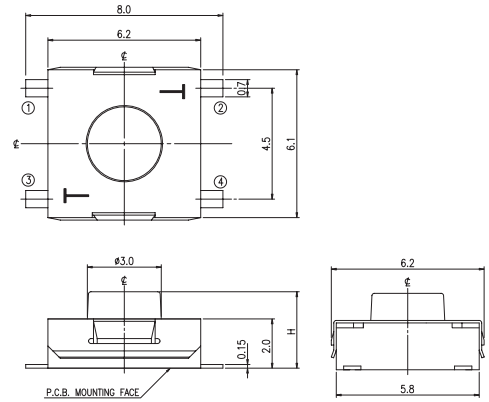
Schematic



P.C.B Layout



■ Outline Drawing

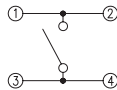


General Tolerance : ±0.2mm.

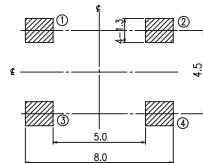
■ SMT- J Type Vertical 6.2L x 6.2W x _H [Without Ground Terminal]

Product No.	H	Package
NTC010-APIJ-A__T	2.5	2,000 Pcs/Reel
NTC010-APIJ-B__T	3.1	1,500 Pcs/Reel
NTC010-APIJ-C__T	3.4	1,300 Pcs/Reel

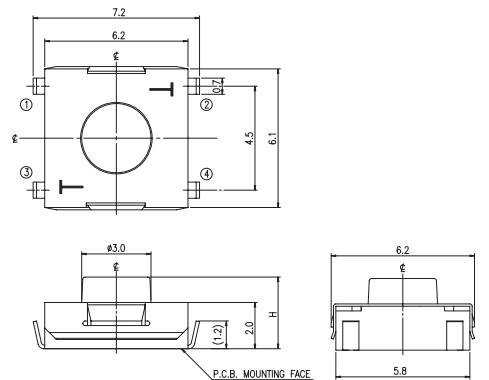
Schematic



P.C.B Layout



■ Outline Drawing

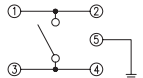


General Tolerance : ±0.2mm.

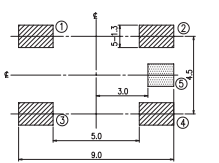
■ SMT- G Type Vertical 6.2L x 6.2W x _H [With Ground Terminal]

Product No.	H	Package
NTC010-BP1G-A__T	2.5	2,000 Pcs/Reel
NTC010-BP1G-B__T	3.1	1,500 Pcs/Reel
NTC010-BP1G-C__T	3.4	1,300 Pcs/Reel

Schematic

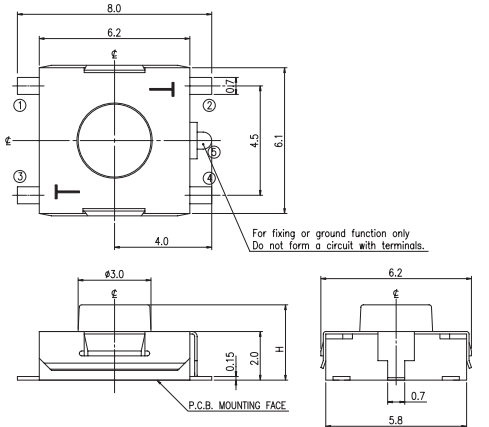


P.C.B Layout



GROUND TERMINAL CAN BE EFFECTIVE EVEN IF NOT SOLDERED.

■ Outline Drawing



General Tolerance : ±0.2mm.