

NSS524 Series

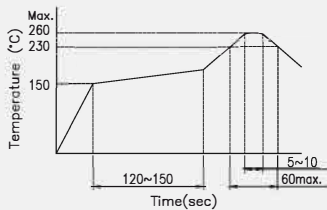
■ Features

- Non shorting.



Timing	Non-Shorting
Rating	DC6V 0.3A
Contact Resistance	70mΩ max
Insulation Resistance	DC500V - 100MΩ min.
Withstand Voltage	AC500V - 1 minute
Stroke	2.0±0.3 mm
Operating Force	200±150 gf

Recommended Reflow Soldering Profile



Number of Reflow Pass : 2 cycles

Recommended Wave Soldering Profile

Parameters	Lead-Free Specification
Preheating Time	60 sec max.
Preheating Temperature	100°C max.
Continuous Dipping Time	3~5 sec max.
Soldering Temperature	260°C max.

Recommended Manual Soldering Profile

	Temperature	Time
Manual Soldering Temperature	350 °C (max.)	3 Sec.(max.)

The solder iron and solder shall be applied at a distance of 1.91 mm to 2.54 mm from the plastic housing.

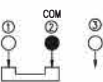
Durability 10,000 cycles

■ SMT-G Type Vertical 9.0L x 3.5W x 3.5H 1 Pole 2 Positions

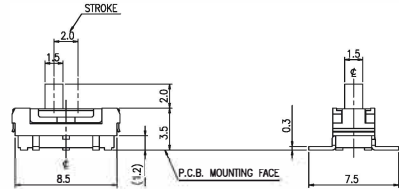
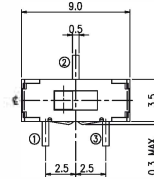
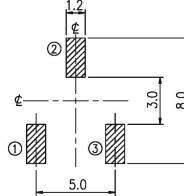
Product No.	Package
NSS524-012N-AABG1T	900 Pcs/Reel

■ Outline Drawing

Schematic



P.C.B Layout



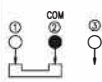
General Tolerance : ±0.2mm.

■ SMT-G Type Vertical 9.0L x 3.5W x 3.5H 1 Pole 2 Positions

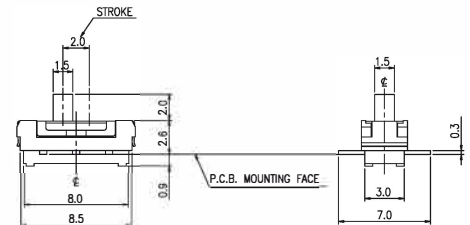
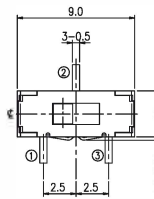
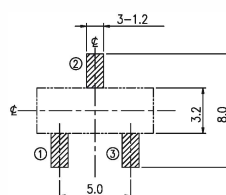
Product No.	Package
NSS524-012N-AABG1T-A	950 Pcs/Reel

■ Outline Drawing

Schematic



P.C.B Layout



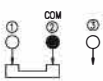
General Tolerance : ±0.2mm.

■ DIP -D Type Vertical 9.0L x 3.5W x 3.5H 1 Pole 2 Positions

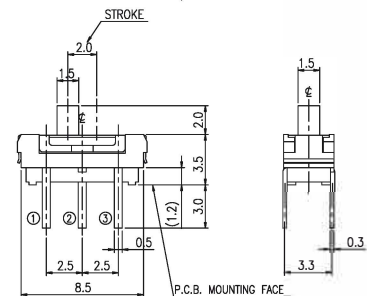
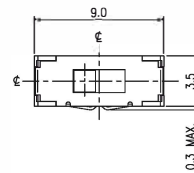
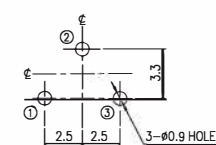
Product No.	Package
NSS524-012N-AABD1B	Bulk

■ Outline Drawing

Schematic



P.C.B Layout



General Tolerance : ±0.2mm.

DIP - D Type Horizontal 9.0L x 3.5 W x 3.5H
1 Pole 2 Positions

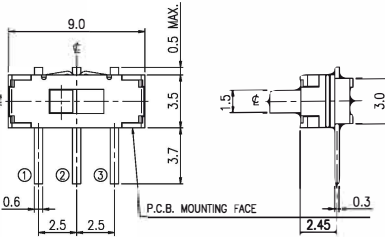
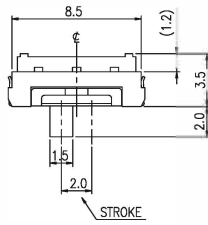
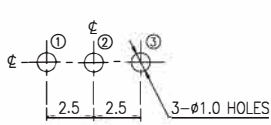
Product No.	Package
NSS524-012N-ABBD1B	Bulk

Outline Drawing

Schematic



P.C.B Layout



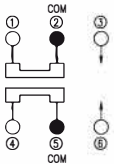
General Tolerance : ±0.2mm.

DIP - D Type Vertical 9.0L x 3.5 W x 3.5H
2 Pole 2 Positions

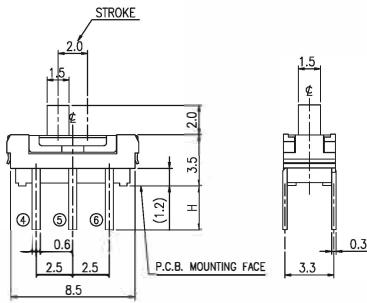
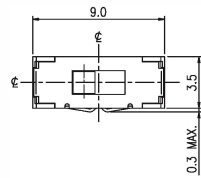
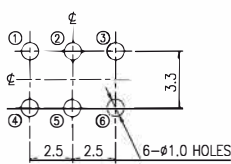
Product No.	H	Package
NSS524-022N-ABBD1B	3.0	Bulk
NSS524-022N-ABBD1B-A	2.5	
NSS524-022N-ABBD1B-B	2.0	

Outline Drawing

Schematic



P.C.B Layout



General Tolerance : ±0.2mm.