

# NM302 Series

## Features

- Low profile H:2.3mm.
- Available for various devices.



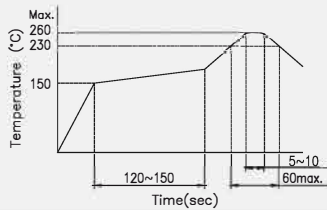
Rating	DC5V 10mA
Contact Resistance	1Ω max.
Insulation Resistance	DC100V -100MΩ min.
Withstand Voltage	AC100V - 1 minute
Travel	

Rotation Angle	On : $12.5^{\circ} \pm 3^{\circ}$
	Full: $18.0^{\circ} \pm 3^{\circ}$
Push Stroke	On : $0.5 \pm 0.3$ mm
	Full: $0.9 \pm 0.3$ mm

### Operating Force

CW	70±50gf
CCW	70±50gf
Push	200±100gf

### Recommended Reflow Soldering Profile



### Recommended Manual Soldering Profile

	Temperature	Time
Manual Soldering Temperature	350 °C (max.)	3 Sec.(max.)

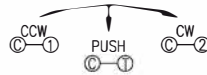
The solder iron and solder shall be applied at a distance of 1.91 mm to 2.54 mm from the plastic housing.

Durability	100,000 cycles
------------	----------------

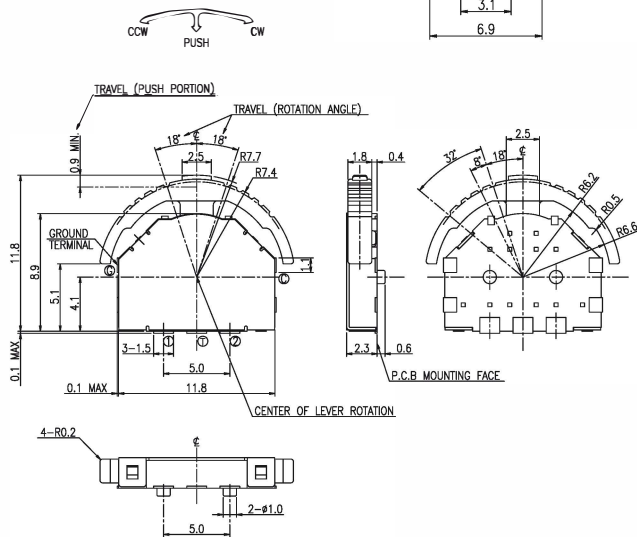
## SMT - G Type 11.8L x 11.8 W x 2.3H

Product No.	Package
NM302-PL01-GT	850 Pcs/Reel

### Schematic



### Outline Drawing



General Tolerance : ±0.2mm.

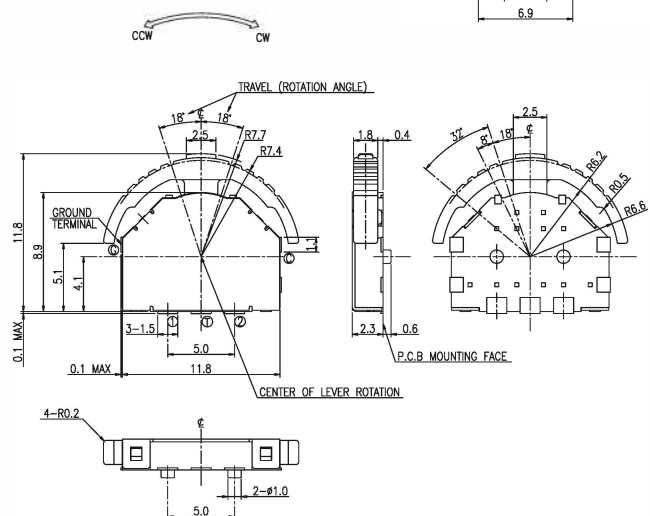
## SMT - G Type 11.8L x 11.8 W x 2.3H

Product No.	Package
NM302-PL02-GT	850 Pcs/Reel

### Schematic



### Outline Drawing



General Tolerance : ±0.2mm.