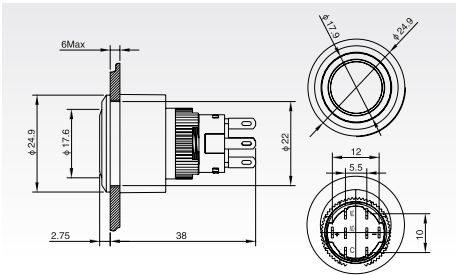
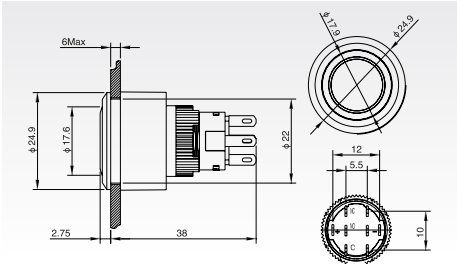


DIOH-S1-AWY- Series

DIOH-S1-AWY
Ø 22mm
Head illumination



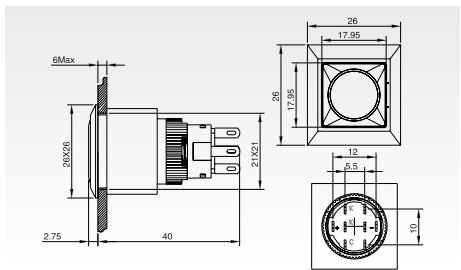
DIOH-S1-AWY
Ø 22mm
Symbol illumination



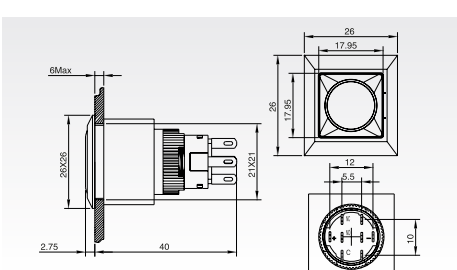
HBS1 - AWY		
Terminal Type		Pin Terminal
Switch Specifications		5A / 250 VAC
Contact Configuration		1NO1NC / 2NO2NC
Operating Type		Momentary / Latching
Crust Material		PC
Lamp Parameters	Type	LED
	Rated Voltage (V)	6 / 12 / 24 / 36 / 110 / 220
	Color	R G Y O B W

DIOH-S1-AWF - Series

DIOH-S1-AWF
21mm x 21mm
Head illumination



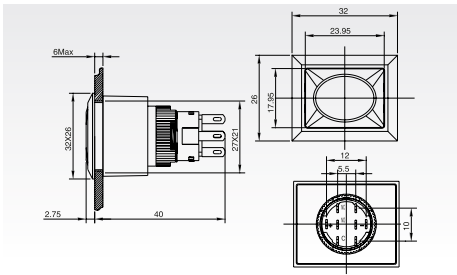
DIOH-S1-AWF
21mm x 21mm
Symbol illumination



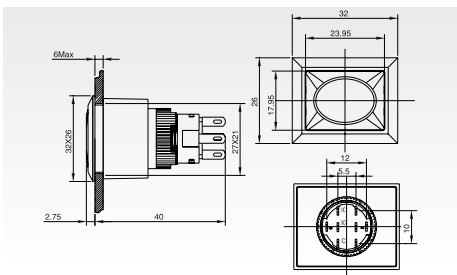
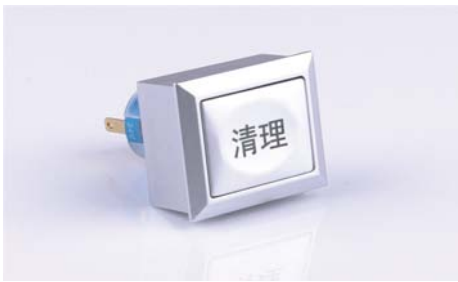
HBS1 - AWF		
Terminal Type		Pin Terminal
Switch Specifications		5A / 250 VAC
Contact Configuration		1NO1NC / 2NO2NC
Operating Type		Momentary / Latching
Crust Material		PC
Lamp Parameters	Type	LED
	Rated Voltage (V)	6 / 12 / 24 / 36 / 110 / 220
	Color	R G Y O B W

DIOH-S1-AWJ - Series

DIOH-S1-AWJ
27mm x 21mm
Head illumination



DIOH-S1-AWJ
27mm x 21mm
Symbol illumination



HBS1 - AWJ		
Terminal Type		Pin Terminal
Switch Specifications		5A / 250 VAC
Contact Configuration		1NO1NC / 2NO2NC
Operating Type		Momentary / Latching
Crust Material		PC
Lamp Parameters	Type	LED
	Rated Voltage (V)	6 / 12 / 24 / 36 / 110 / 220
	Color	R G Y O B W

Labeling Program

