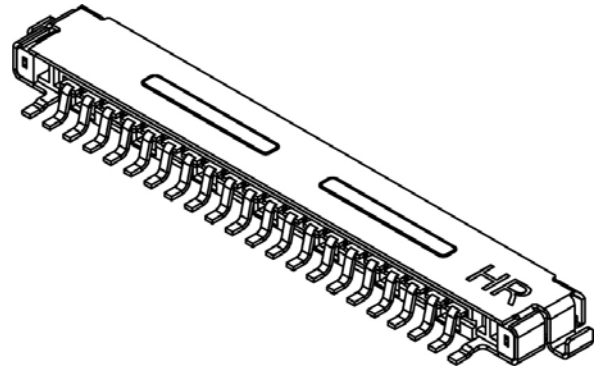


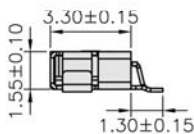
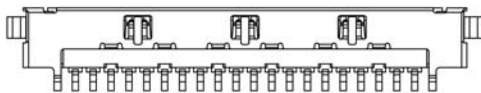
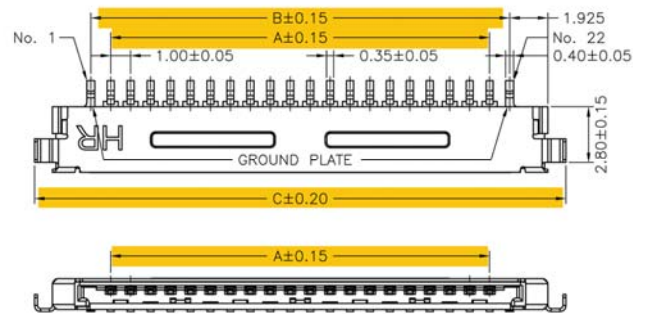
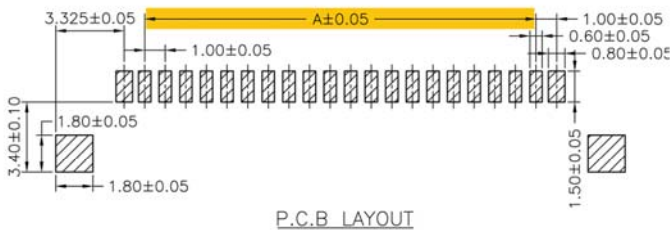
SVHJ-A1006 SERIES
1.0mm pitch
Wire to board connector
Right Angle Wafer SMT-Type

SVHJ – A1006WRS-xxP



Specification

Current Rating	1A AC / DC
Voltage Rating	200V AC / DC
Temperature Range	-25°C ~ +85°C
Contact Resistance	40mΩ Max.
Insulation Resistance	100MΩ Min.
Withstanding Voltage	500V AC/minute
Pin Material	Phosphor Bronze/Gold-plated
Material	LCP, UL94V-0
Shell	Phosphor Bronze/Tin-plated
Color	Natural (Beige)



Ordering Information & Dimensions

SVHJ - F1006H - xxP	Dimensions (mm)		
	A	B	C
SVHJ - F1006WRS – 20P	19.00	21.00	26.65
SVHJ - F1006WRS - 30P	29.00	31.00	36.65

P = Pin