

External Drive Piezo Transducer

SGBD-65PZ14400

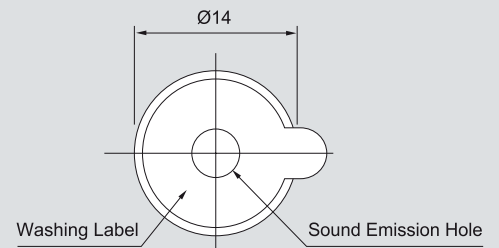


Electrical Specifications

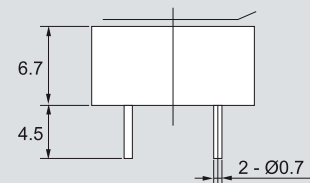
Model	65PZ14400	
Min. Sound Output (dBA)	80 min. (9V p-p / Square Wave / 10cm / 4000Hz)	
Capacitance (pF)	13000 ± 30% at 120Hz	
Max. Input Voltage (V p-p)	20	
Operating Temperature (°C)	-20 ~ +70	
Weight (g)	1	

Dimensions

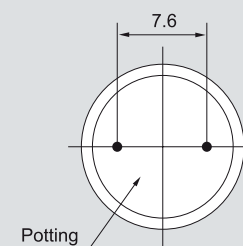
Top View



Side View



Bottom View



all dimensions are in mm

Frequency Response

