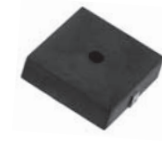


External Drive Piezo Transducer

SGBD-214PZ15400

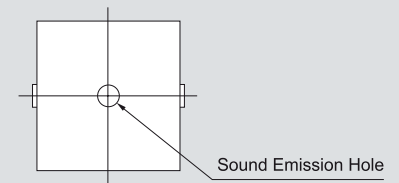


Electrical Specifications

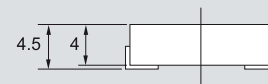
Model		214PZ15400
Min. Sound Output	(dBA)	75 min. (5V p-p / Square Wave / 10cm / 4000Hz)
Capacitance	(pF)	12000 ± 30% at 120Hz
Max. Input Voltage	(V p-p)	20
Operating Temperature	(°C)	-20 ~ +70
Weight	(g)	0.8

Dimensions

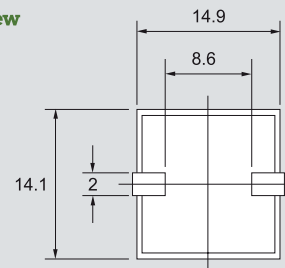
Top View



Side View



Bottom View



all dimensions are in mm

Frequency Response

