

External Drive Piezo Transducer

SGBD-199PZ11410

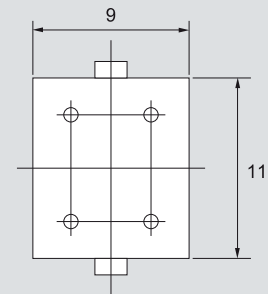


Electrical Specifications

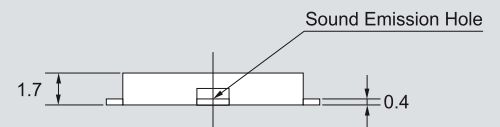
e1		199PZ11410
Min. Sound Output	(dBA)	70 min. (5V p-p / Square Wave / 10cm / 4100Hz)
Capacitance	(pF)	10000 ± 30% at 1000Hz
Max. Input Voltage	(V p-p)	25
Operating Temperature	(°C)	-20 ~ +70
Weight	(g)	1.6

Dimensions

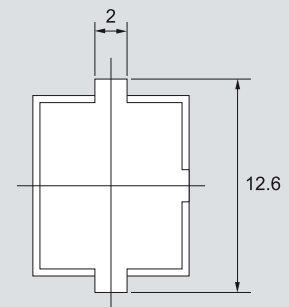
Top View



Side View



Bottom View



all dimensions are in mm

Frequency Response

