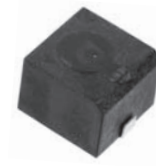


External Drive Piezo Transducer

SGBD-186PZ14330

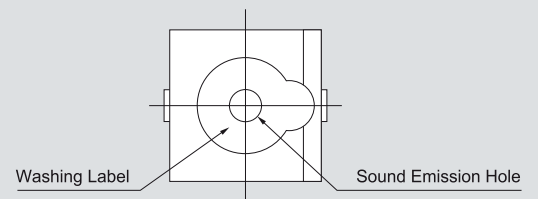


Electrical Specifications

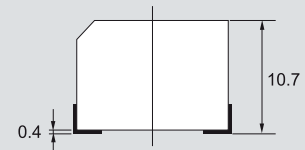
Model	186PZ14330	
Min. Sound Output	(dBA)	80 min. (5V p-p / Square Wave / 10cm / 3300Hz)
Capacitance	(pF)	15000 ± 30% at 120Hz
Max. Input Voltage	(V p-p)	20
Operating Temperature	(°C)	-20 ~ +70
Weight	(g)	2.3

Dimensions

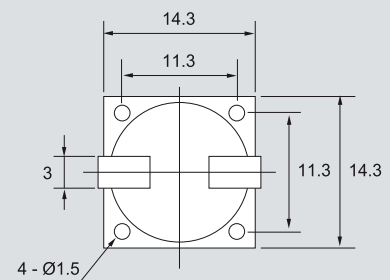
Top View



Side View



Bottom View



all dimensions are in mm

Frequency Response

