

External Drive Piezo Transducer

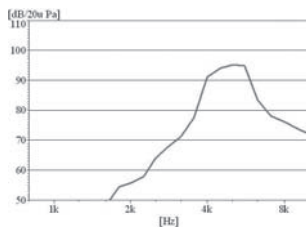
SGBD-109PZ18400



Electrical Specifications

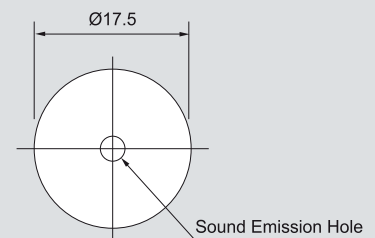
Model	109PZ18400	
Min. Sound Output	(dBA)	85 min. (3V rms / Sine Wave / 10cm / 4000Hz)
Capacitance	(pF)	12000 ± 30% at 120Hz
Max. Input Voltage	(V p-p)	30
Operating Temperature	(°C)	-20 ~ +60
Weight	(g)	2

Frequency Response

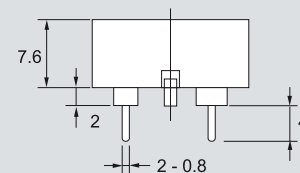


Dimensions

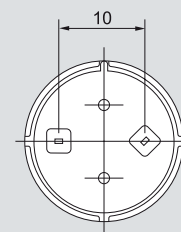
Top View



Side View



Bottom View



all dimensions are in mm