

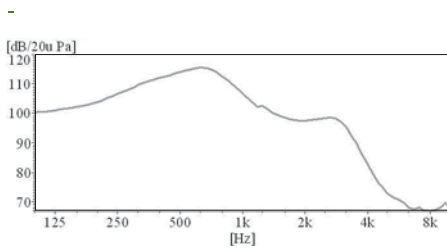
Receiver

SGBD-RJ1506D107032



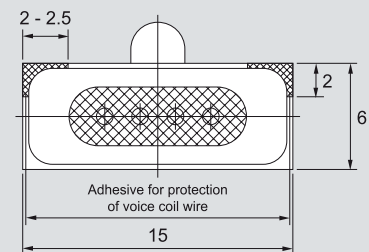
Electrical Specifications

Model		RJ1506D107032
Sensitivity at 1K Hz (IEC318 COUPLER)	(dB)	107 ± 3
Input at 1KHz	(V)	180 m
Impedance at 1.5 KHz	(Ω)	32 + 10 / - 20 %
Frequency range	(Hz)	300 ~ 4000
Operating Temperature	(°C)	- 30 ~ + 70
Weight	(g)	0.7

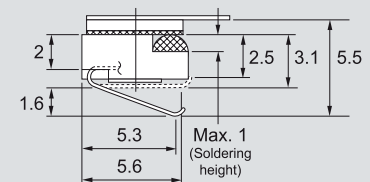


Dimensions

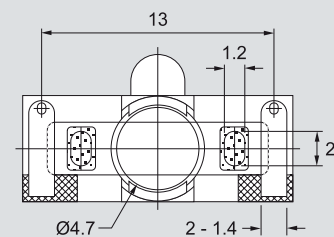
Top View



Side View



Bottom View



all dimensions are in mm