

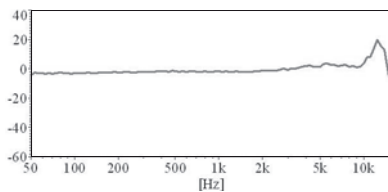
## Microphone

### SGBD-RC4738TD423C3



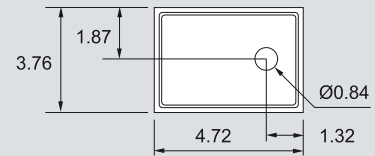
### Electrical Specifications

Model	RC4738TD423C3	
Directivity	Omnidirectional	
Operating Voltage Range	(V)	1.5 ~ 3.6
Power Supply (Vs)	(V)	2.2
Resistance Loading (RL)	(Ω)	2.2 K
Sensitivity (0 dB = 1V / Pa) at 1K Hz	(dB)	-42 ± 3
Max. Current	(mA)	0.2
Frequency Range	(Hz)	100 ~ 16000
Voltage Deduction Characteristic	Within 3 dB at 2 V	
S / N Ratio	(dB)	More than 55



### Dimensions

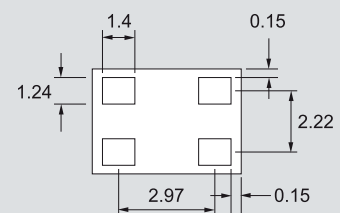
#### Top View



#### Side View



#### Bottom View



all dimensions are in mm