

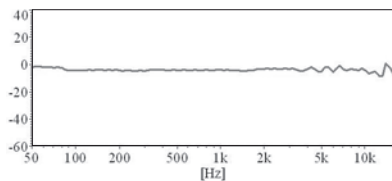
# Microphone

## SGBD-IB3015CD443



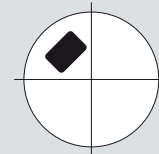
### Electrical Specifications

Model	IB3015CD443	
Directivity	Omnidirectional	
Operating Voltage Range	(V)	1.4 ~ 5
Power Supply (Vs)	(V)	2
Resistance Loading (RL)	(Ω)	2.2 K
Sensitivity (0 dB = 1V / Pa) at 1K Hz	(dB)	-44 ± 3
Max. Current	(mA)	0.5
Frequency Range	(Hz)	100 ~ 10000
Voltage Deduction Characteristic	Within 3 dB at 1.5 V	
S / N Ratio	(dB)	More than 60

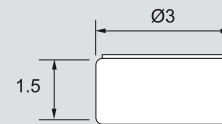


### Dimensions

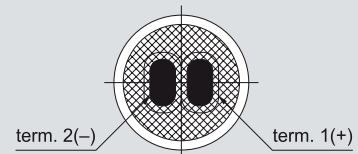
#### Top View



#### Side View



#### Bottom View



all dimensions are in mm