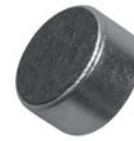


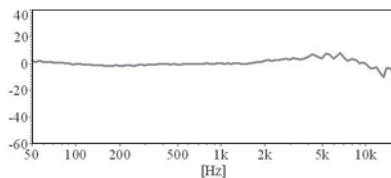
Microphone

SGBD-C9745BD403



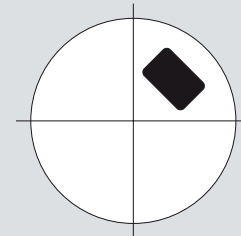
Electrical Specifications

Model	C9745BD403	
Directivity	Omnidirectional	
Operating Voltage Range	(V)	1 ~ 10
Power Supply (Vs)	(V)	1.5
Resistance Loading (RL)	(Ω)	2.2 K
Sensitivity (0 dB = 1V / Pa) at 1K Hz	(dB)	-40 ± 3
Max. Current	(mA)	0.5
Frequency Range	(Hz)	50 ~ 16000
Voltage Deduction Characteristic	Within 3 dB at 1.1 V	
S / N Ratio	(dB)	More than 60

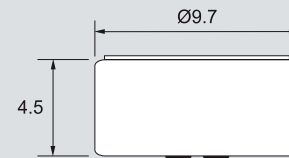


Dimensions

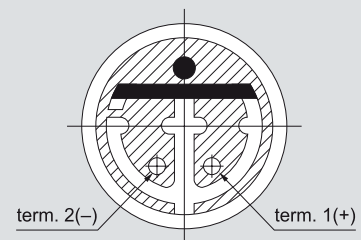
Top View



Side View



Bottom View



all dimensions are in mm