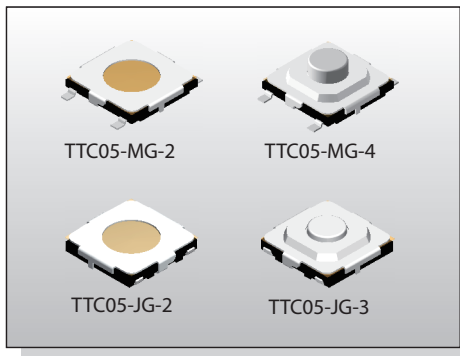


TACT SWITCH DISD-TTC05

5x5 SMT & J SMT Type
(H: 0.8 & 1.5mm)



FEATURES

- ✧ Compact-sized 5x5mm
- ✧ Available from 0.8mm-3.0mm height
- ✧ With ground terminal

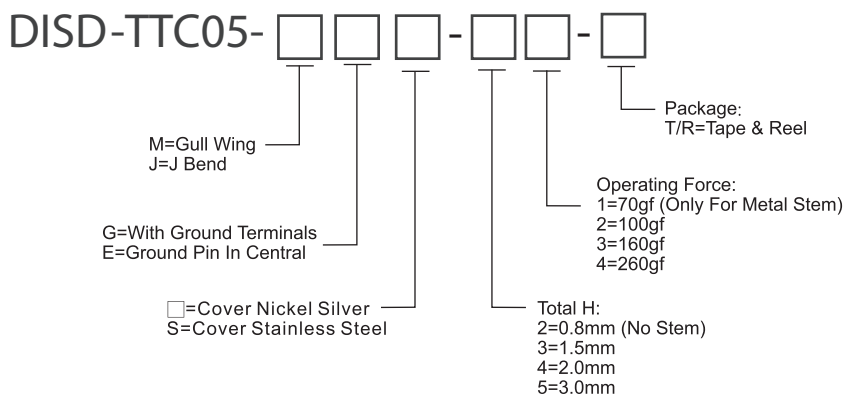
APPLICATION

- ✧ Smart Phone
- ✧ Digital Camera, Medical
- ✧ Portable Electronic Device

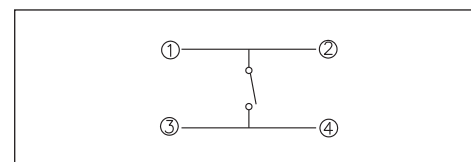
SPECIFICATION

Contact Rating	50mA, 12V DC
Contact Resistance	100mΩ max.
Insulation Resistance	100MΩ min. 500V DC
Dielectric Strength	250V AC/1 minute
Operating Force	70±30gf/ 100±50gf/160±50gf 260±50gf
Travel	0.25±0.1/-0.2mm
Operating Life	200,000 cycles for 260gf 1,000,000 cycles for 160/100/70gf
Operating Temp.	-25°C ~ +70°C
Storage Temp.	-30°C ~ +80°C

HOW TO ORDER



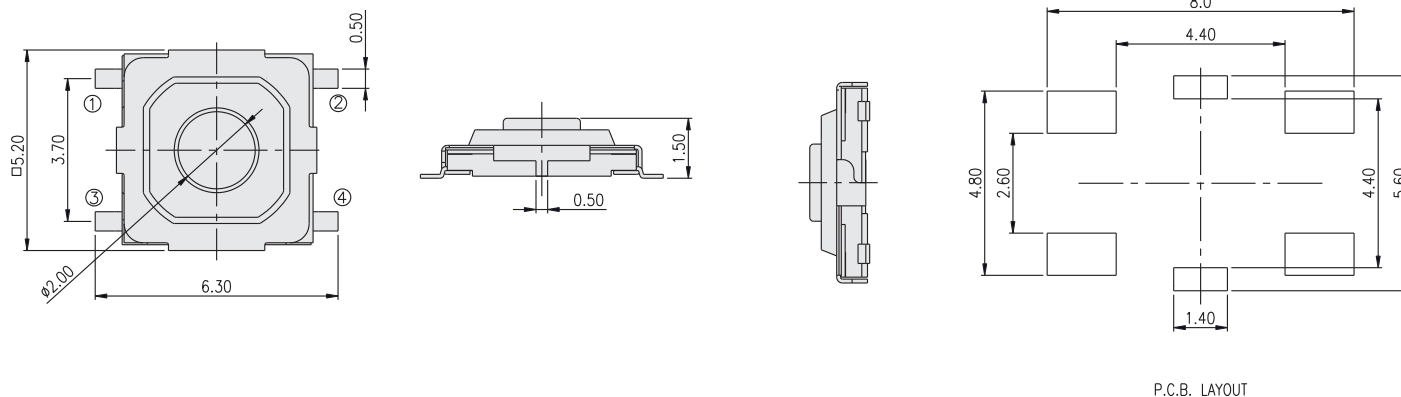
CIRCUIT



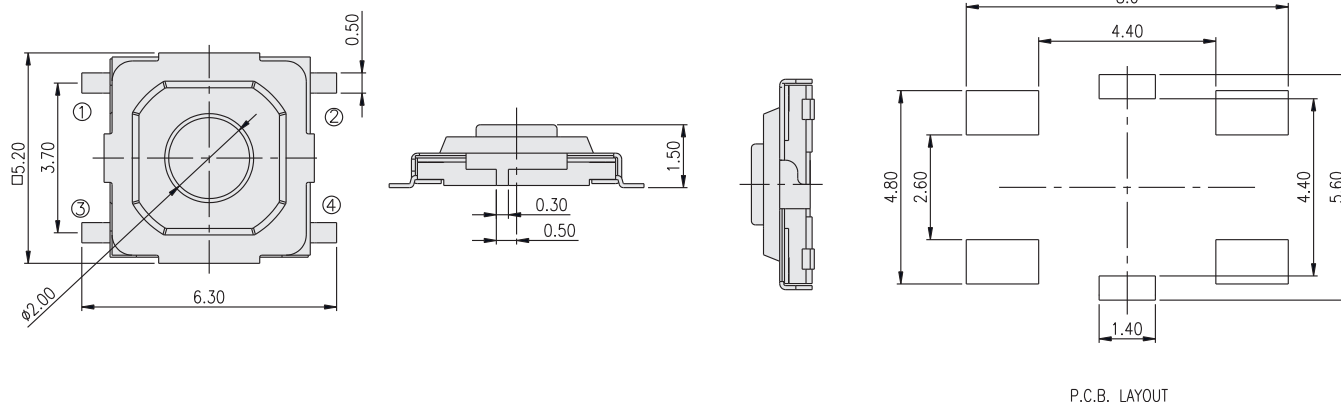
PACKAGE

<Tape & Reel>
4000 pcs

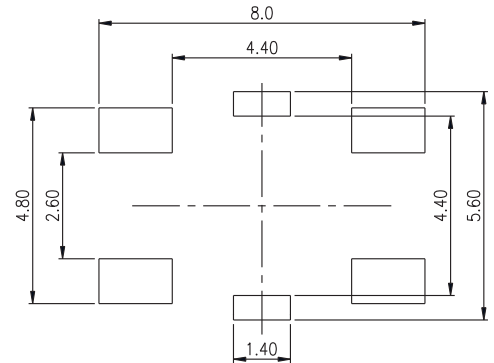
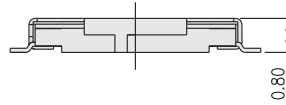
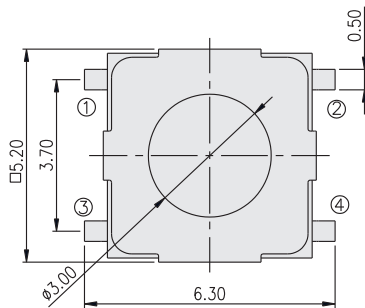
TTC05-ME



TTC05-MG-3

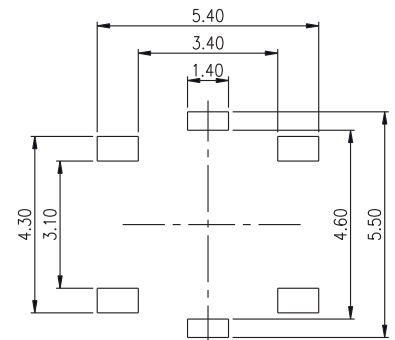
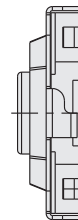
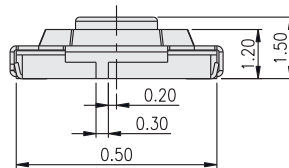
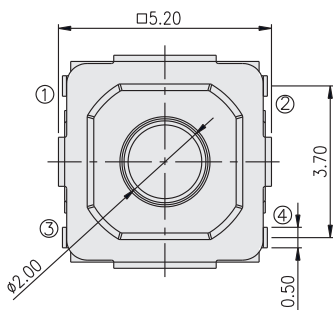


TTC05-MG-2



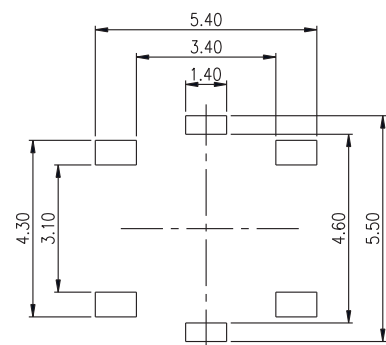
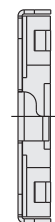
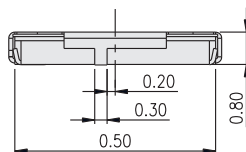
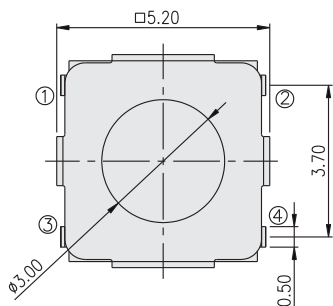
P.C.B. LAYOUT

TTC05-JG-3



P.C.B. LAYOUT

TTC05-JG-2



P.C.B. LAYOUT