**FEATURES**

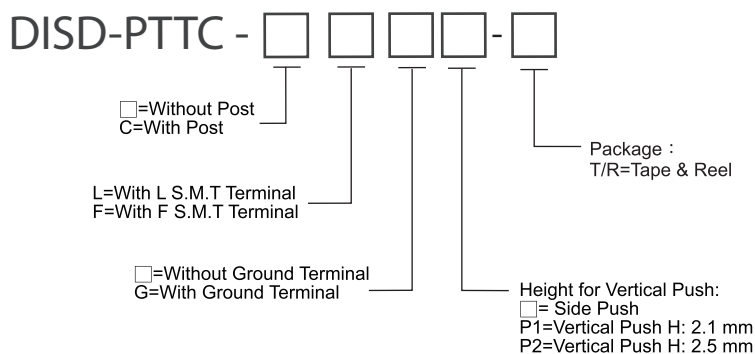
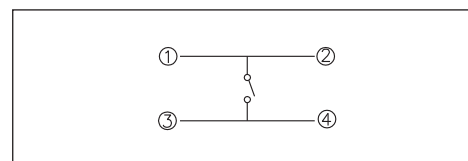
- ※ For high density mounting
- ※ Vertical or side actuation
- ※ Reflow solderable

APPLICATION

- ※ Automotive
- ※ Portable Electronic Device
- ※ Control panel

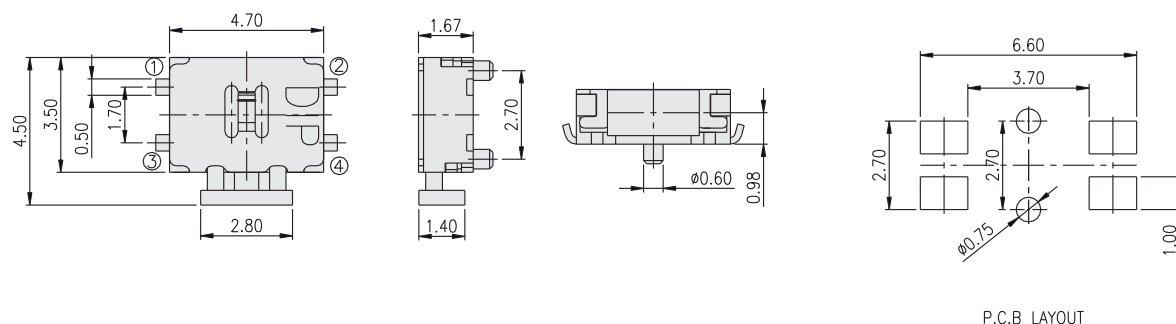
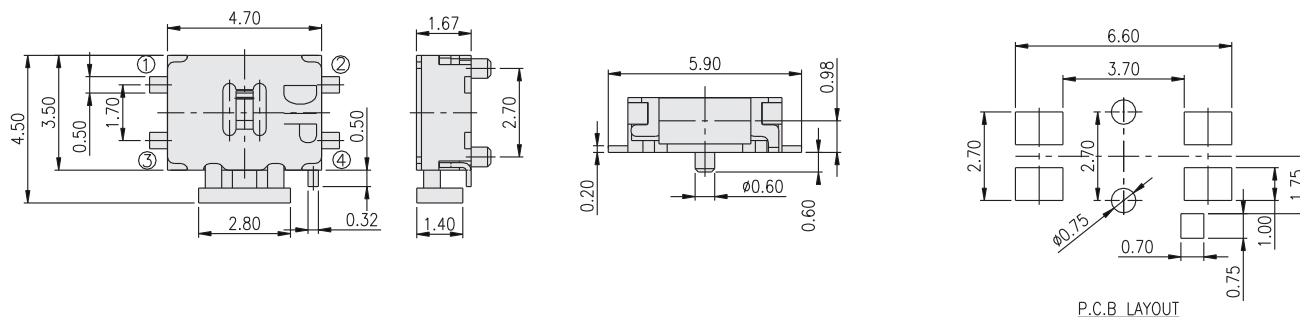
SPECIFICATION

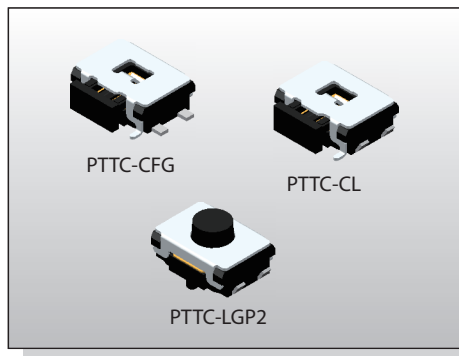
Contact Rating	50mA, 12V DC
Contact Resistance	100mΩ max.
Insulation Resistance	100MΩ min. 500V DC
Dielectric Strength	250V AC/1 minute
Operating Force	160±50gf (Vertical Push) 220+80/-70gf (Side Push)
Travel	0.20±0.1mm (Vertical Push) 0.30+0.1/-0.15mm (Side Push)
Operating Life	100,000 cycles
Operating Temp.	-25°C ~ +70°C
Storage Temp.	-30°C ~ +80°C

HOW TO ORDER**CIRCUIT****PACKAGE****<Tape & Reel>**

Side push type: 3000 pcs

Vertical push type: 2400 pcs

DISD-PTTC-CL**DISD-PTTC-CFG**

**FEATURES**

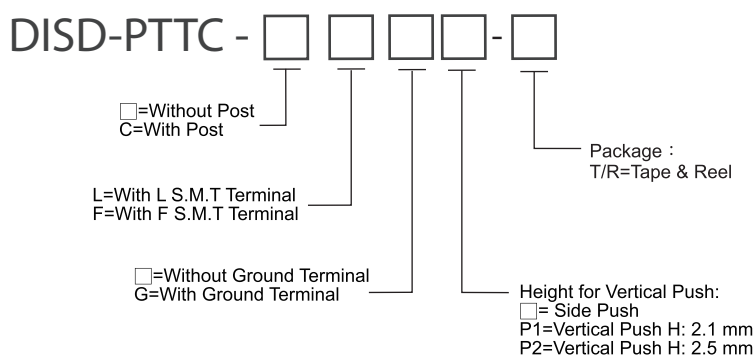
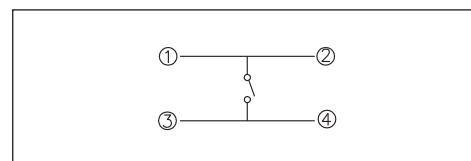
- ✘ For high density mounting
- ✘ Vertical or side actuation
- ✘ Reflow solderable

APPLICATION

- ✘ Automotive
- ✘ Portable Electronic Device
- ✘ Control panel

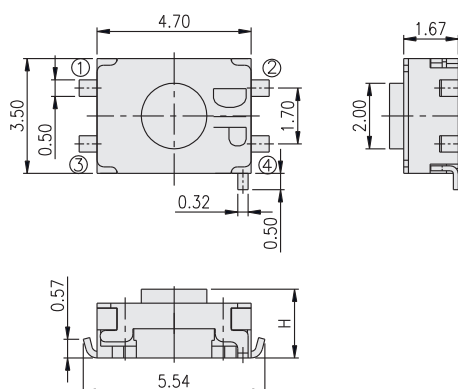
SPECIFICATION

Contact Rating	50mA, 12V DC
Contact Resistance	100mΩ max.
Insulation Resistance	100MΩ min. 500V DC
Dielectric Strength	250V AC/1 minute
Operating Force	160±50gf (Vertical Push) 220+80/-70gf (Side Push)
Travel	0.20±0.1mm (Vertical Push) 0.30+0.1/-0.15mm (Side Push)
Operating Life	100,000 cycles
Operating Temp.	-25°C ~ +70°C
Storage Temp.	-30°C ~ +80°C

HOW TO ORDER**CIRCUIT****PACKAGE****<Tape & Reel>**

Side push type: 3000 pcs

Vertical push type: 2400 pcs

DISD-PTTC-LGP ☐

NAME	H
LGP1	2.10
LGP2	2.50
LGP4	4.30

