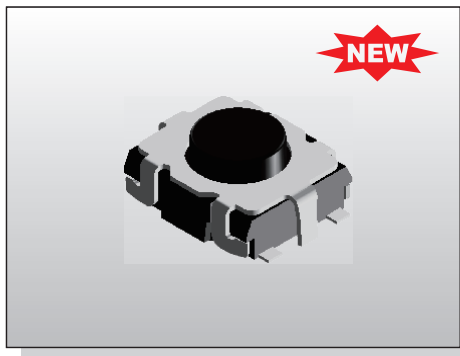


TACT SWITCH DISD-BETC

3x2.7
Vertical Push Type



FEATURES

- ※Electrical life: 200,000 cycles
- ※Sharp Click feeling
- ※3x2.7x1.0mm Miniature Tact Switch

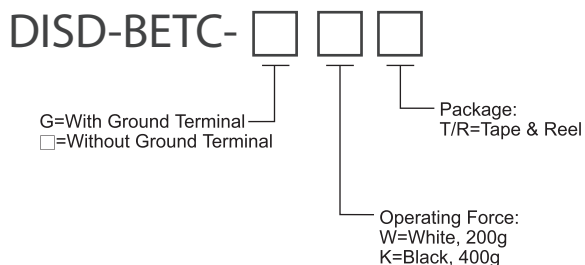
APPLICATION

- ※Automotive
- ※Video game device

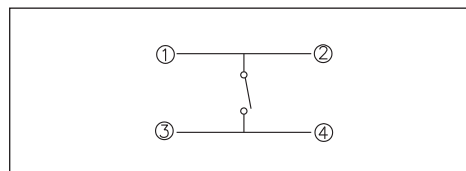
SPECIFICATION

| | |
|-----------------------|--------------------|
| Contact Rating | 50mA, 12V DC |
| Contact Resistance | 500mΩ max. |
| Insulation Resistance | 100MΩ min. 100V DC |
| Dielectric Strength | 250V AC/1 minute |
| Operating Force | 200±50gf/400±80gf |
| Travel | 0.12±0.1mm |
| Operating Life | 200,000 cycles |
| Operating Temp. | -40°C ~ +85°C |
| Storage Temp. | -40°C ~ +90°C |

HOW TO ORDER

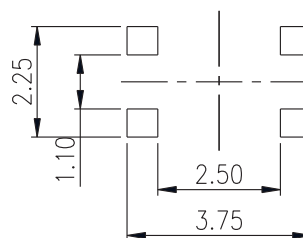
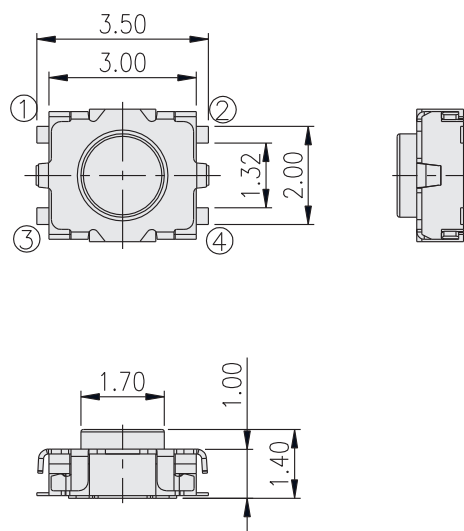


CIRCUIT



PACKAGE

<Tape & Reel>
8000 pcs



P.C.B. LAYOUT