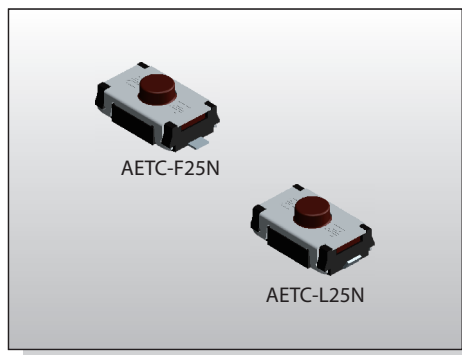


TACT SWITCH DISD-AETC

3.8x6 Thinner Type Tactile Switch



FEATURES

- ※ 3.8x6mm of thinner type 2.5mm height
- ※ Soft actuator with longer travel
- ※ Choice of actuation force

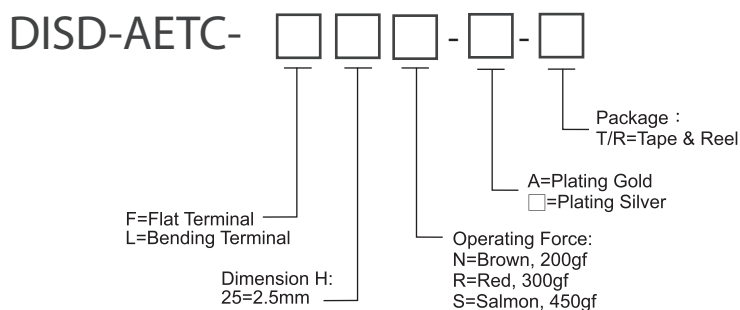
APPLICATION

- ※ Car remote control
- ※ Audio, OA equipment
- ※ Instrumentation

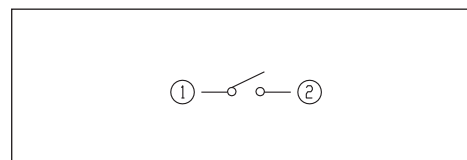
SPECIFICATION

Contact Rating	50mA, 12V DC
Contact Resistance	100mΩ max.
Insulation Resistance	100MΩ min. 500V DC
Dielectric Strength	300V AC/1 minute
Operating Force	200gf, Brown(N) 300gf, Red(R) 450gf, Salmon(S)
Travel	0.30±0.15mm, Brown(N) 0.35±0.15mm, Red(R) 0.45±0.15mm, Salmon(S)
Operating Life	100,000 cycles (S) 200,000 cycles (N/R)
Operating Temp.	-40°C ~ +85°C
Storage Temp.	-40°C ~ +85°C

HOW TO ORDER



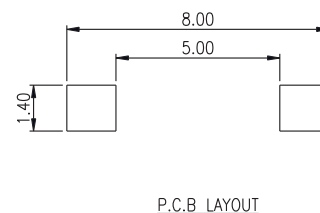
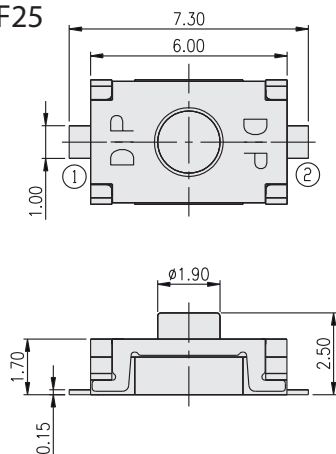
CIRCUIT



PACKAGE

<Tape & Reel>
2700 pcs

AETC-F25



AETC-L25

