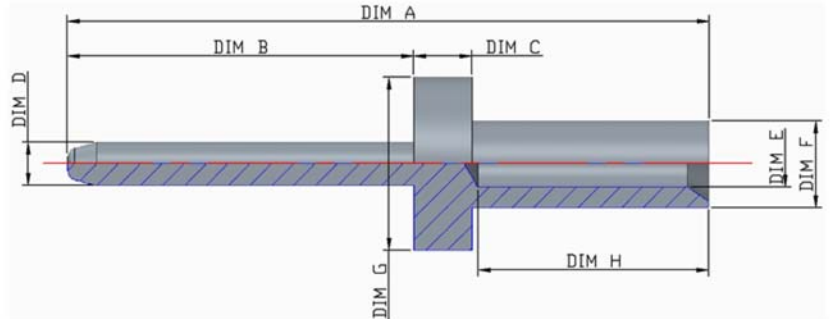


2.2. Standard Series - SAE Type

2.2.1. SAE PlugType

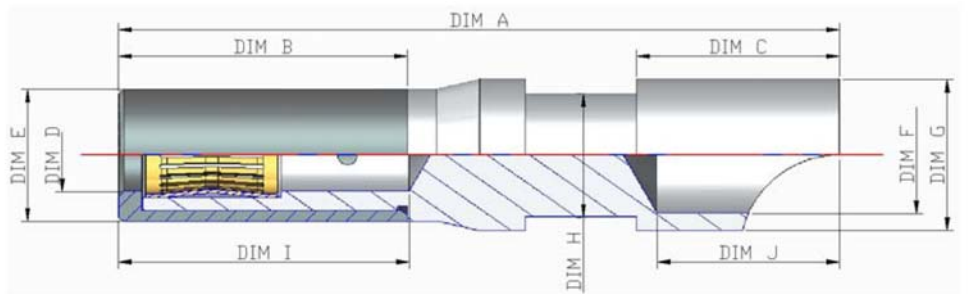
Durability (Cycles): 10.000
Usage: SAE J1772



Ordercode	Mating Diameter (mm)	Dimension (mm)								Mechanical Data	Electrical Specification	
		A	B	C	ΦD	ΦE	ΦF	ΦG	H	Force (N)	Rated Current (A)	Contact Resistance (μΩ)
SVPC-MCSC-0156-015	1.5	22.2	12.0	2.0	1.5	1.6	3.0	6.0	8.0	4	2	1000
SVPC-MCSC-0157-028	2.8	37.0	24.0		2.8	3.5	5.0	8.8	10.0	6	40	500
SVPC-MCSC-0158-036	3.6	34.0	21.0		3.6					8	80	300

2.2.1. SAE Socket Type

Durability (Cycles): 10.000
Usage: SAE J1772



Ordercode	Mating Diameter (mm)	Dimension (mm)										Mechanical Data	Electrical Specification	
		A	B	C	ΦD	ΦE	ΦF	ΦG	ΦH	I	J	Force (N)	Rated Current (A)	Contact Resistance (μΩ)
SVPC-FCSC-0129-015	1.5	36.8	15.2	7.55	1.65	3.1	1.98	2.62	1.7	12.9	6.5	4	2	1000
SVPC-FCSC-0130-028	2.8	38.4	19.9	11.25	2.95	4.9	5.33	6.3	4.0	18.7	10.2	6	40	500
SVPC-FCSC-0131-036	3.6	36.2	14.5	10.15	3.75	6.73	5.9	7.65	6.2	14.6	9.15	8	80	300
SVPC-FCSC-0136-036				6.75			3.85	4.85					40	