

# NM301 Series

## Features

- Compact size.
- Available for various devices.



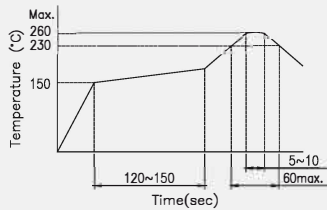
Rating	DC5V 10mA
Contact Resistance	1Ω max.
Insulation Resistance	DC100V -100MΩ min.
Withstand Voltage	AC100V - 1 minute
Travel	

Rotation Angle	On: 12.5°±3° Full: 18.0°±3°
Pust Stroke	On: 0.5±0.3mm Full: 0.8±0.3mm

### Operating Force

CW	100gf max.
CCW	100gf max.
Push	250±150gf

### Recommended Reflow Soldering Profile



### Recommended Manual Soldering Profile

	Temperature	Time
Manual Soldering Temperature	350 °C (max.)	3 Sec.(max.)

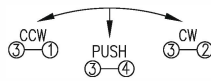
The solder iron and solder shall be applied at a distance of 1.91 mm to 2.54 mm from the plastic housing.

Durability 50,000 cycles

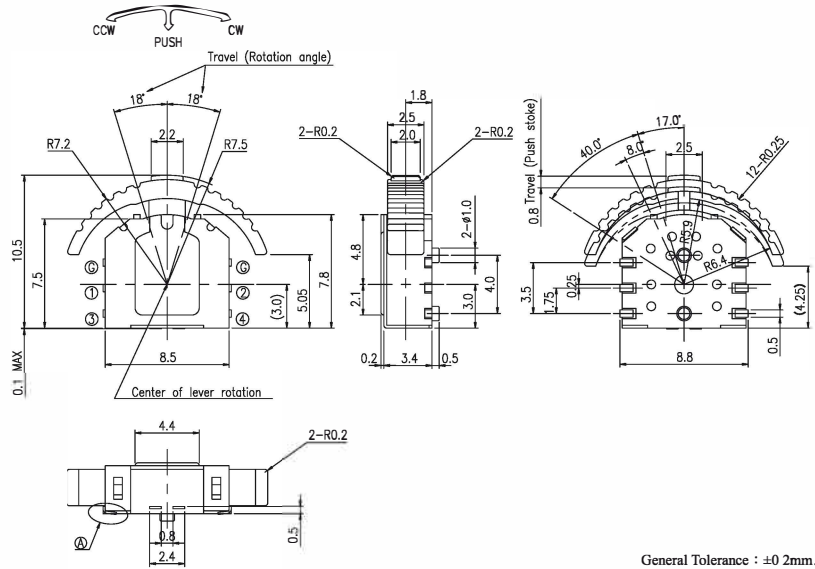
## SMT - G Type 10.5L x 8.5 W x 3.6H

Product No.	Package
NM301-PL01-GT	900 Pcs/Reel

### Schematic

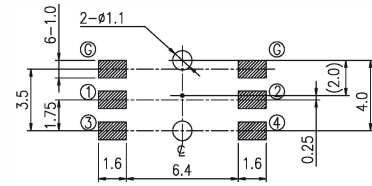


### Outline Drawing



General Tolerance : ±0.2mm.

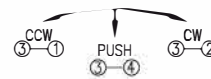
### P.C.B Layout



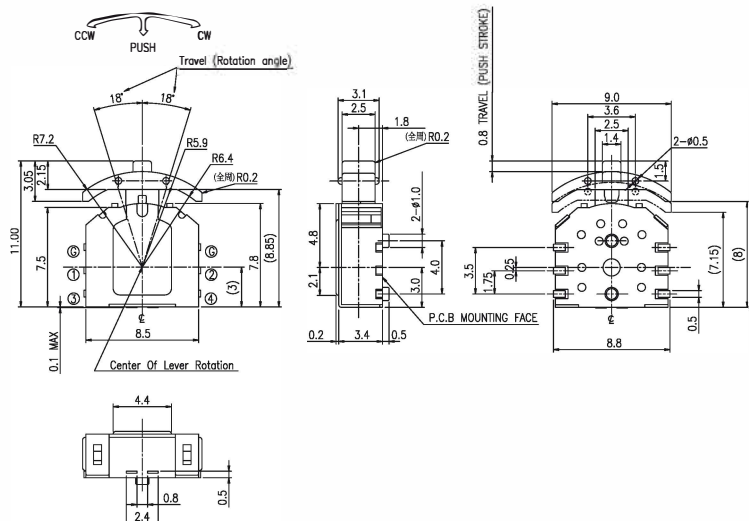
## SMT - G Type 11.0L x 8.5 W x 3.6H

Product No.	Package
NM301-PL05-GT	900 Pcs/Reel

### Schematic



### Outline Drawing



General Tolerance : ±0.2mm.

### P.C.B Layout

